

Mini Spider Cranes

281

- Total width 1.4m
- Max working radius 17.83m
- Diesel engine and optional mains electric
- Zero length increase with electric option
- Operator control of outrigger extension
- Intelligent voice warning system
- Radio remote control as standard
- Working area limitation
- Slew limitation (optional)
- Intelligent throttle activation for economy and ecology



URW-547 [4.0t x 2.5m]

The URW-547 offers extended reach, providing a maximum lifting height of 18.2 metres and a maximum lifting capacity of 4 tonnes as standard on the main boom.

The outrigger footprint remains the same as the URW-506, maintaining its compact dimensions. An option of additional length is given with a quickly installed searcher hook, with angles varying from 0° to 60° and a maximum capacity of 500kg.

Reference Code

MCU547

Remotes



Standard radio remote control

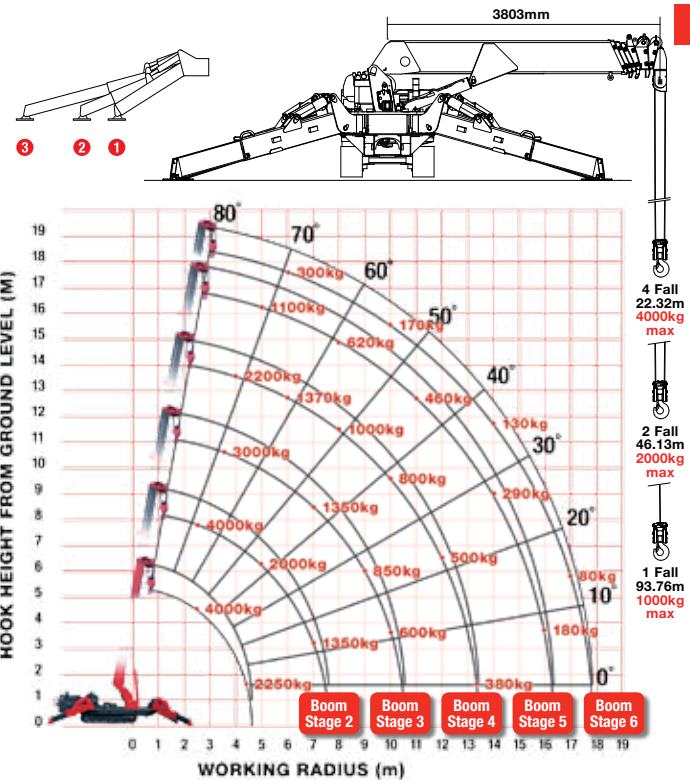
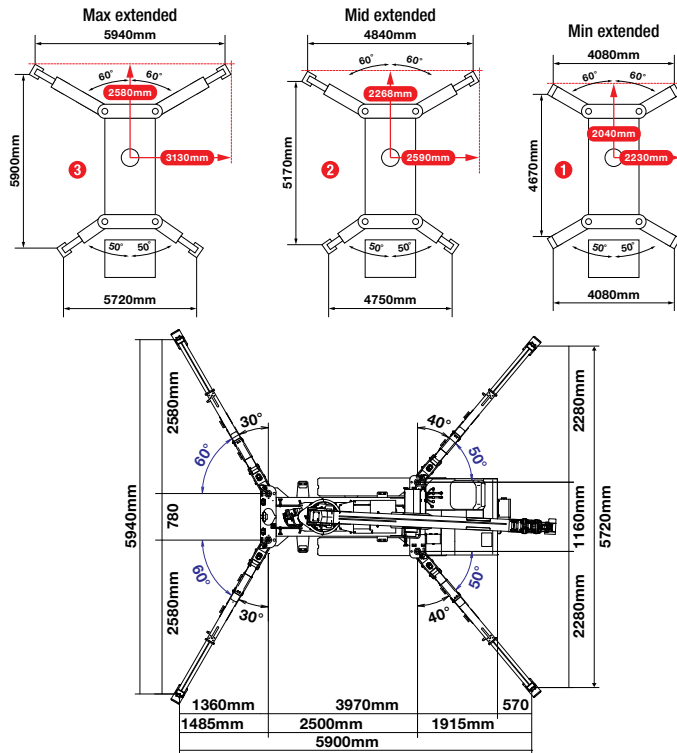


Optional radio remote control with digital feedback

Crane Specifications

Crane capacity	capacity:	4.0t x 2.5m
Max working radius	max:	17.83m
Max lifting height	approx:	18.2m
Rope length	max:	22.32m (4 fall), 46.13m (2 fall), 93.76m (1 fall)
Dimensions	folded:	4955mm (l) x 1400mm (w) x 1980mm (h)
Weight	unladen:	5010kg (5160kg with electric option)
Point loadings	Due to the many variables involved, point loadings are only available on request	
Hook speed	approx:	14m/min (with 5 layers and 4 falls)
Telescopic system	boom length: telescoping speed: boom type:	3.99 - 18.02m 14.03m/35 seconds 7 section hydraulically telescoping boom, hexagonal box construction
Derricking angle/speed	approx:	0 - 80°/18.0 seconds
Slewing angle/speed	approx:	360° (continuous) 2.5 rpm
Traction system	drive: travel speed: gradeability: track ground length: track ground pressure: track width:	hydrostatic 2-speed, stepless forward and reverse 0 - 3km/h ±(23)° 1750mm 47kPa (0.48kg/cm²) 300mm
Engine	manufacturer: fuel: maximum output: starting method: tank capacity:	Mitsubishi / Yanmar diesel (electric dual power option) 17.5kW (23.8PS) / 2100min rpm electric 40 litres
Electric motor	power: voltage:	7.5kW 400v AC 50/60Hz
Standard equipment	computer controlled moment limiter (safe load indicator), radio remote control, overwinding alarm, computer controlled intelligent voice warning system, multi-function operation by radio remote control, intelligent throttle activation, automatic hook stow, overload warning alarms, overload warning lamps, working area limitation	
Optional equipment	1 fall hook block, 2 fall hook block, mains electric dual power (400v), low marking tracks, slew limitation, 500kg maximum capacity small searcher hook, radio remote control with feedback display, data logging	

Rated Loads & Outrigger Positions



282

URW-547 Spider Crane

SECOND STAGE EXTENDED 3.99 - 7.7M BOOM LENGTH

Working radius	m	up to 2.5	2.7	3.0	3.5	4.0	4.5	5.0	5.5	6.0	7.0	7.25	7.51
Outrigger	Max-extended	kg	4,000	3,850	3,500	3,000	2,550	2,250	2,000	1,800	1,630	1,350	1,300
	Mid-extended	kg	4,000	3,850	3,500	3,000	2,550	2,200	1,850	1,630	1,400	1,010	850
	Min-extended	kg	4,000	3,850	3,500	3,000	2,550	2,100	1,640	1,320	1,080	750	620

THIRD STAGE EXTENDED 7.7 - 10.66M BOOM LENGTH

Working radius	m	up to 3.5	4.0	5.0	6.0	7.0	8.0	9.0	10.0	10.20	10.47	
Outrigger	Max-extended	kg	3,000	2,550	2,000	1,650	1,350	1,100	850	600	600	520
	Mid-extended	kg	3,000	2,550	1,850	1,400	1,100	830	630	490	490	430
	Min-extended	kg	3,000	2,550	1,650	1,150	840	620	460	350	350	300

FOURTH STAGE EXTENDED 10.66 - 13.57M BOOM LENGTH

Working radius	m	up to 4.0	4.5	5.0	6.0	7.0	8.0	9.0	10.0	11.0	12.0	13.0	13.38	
Outrigger	Max-extended	kg	2,200	1,900	1,700	1,370	1,150	1,000	900	800	660	500	410	380
	Mid-extended	kg	2,200	1,800	1,600	1,300	1,050	850	700	550	450	360	290	260
	Min-extended	kg	2,200	1,800	1,600	1,150	800	650	520	400	320	250	190	170

FIFTH STAGE EXTENDED 13.57 - 16.48M BOOM LENGTH

Working radius	m	up to 5.0	5.5	6.0	7.0	8.0	9.0	10.0	11.0	12.0	13.0	14.0	15.0	16.0	16.0	16.20	16.29
Outrigger	Max-extended	kg	1,100	950	880	730	620	570	520	460	410	350	290	230	230	180	170
	Mid-extended	kg	1,100	950	880	700	600	520	450	400	350	300	250	190	150	140	140
	Min-extended	kg	1,100	950	850	700	500	420	390	340	290	230	180	140	100	100	100

SIXTH STAGE EXTENDED 16.48 - 18.02M BOOM LENGTH

Working radius	m	up to 6.0	7.0	8.0	9.0	10.0	11.0	12.0	13.0	14.0	15.0	16.0	17.0	17.83	
Outrigger	Max-extended	kg	300	250	230	200	170	160	150	140	130	120	110	80	50
	Mid-extended	kg	300	250	230	200	170	160	150	140	130	120	110	80	50
	Min-extended	kg	300	250	230	200	170	160	150	140	130	120	110	80	50

Searcher Hook Small - 500kg

Stowed position **In operation**

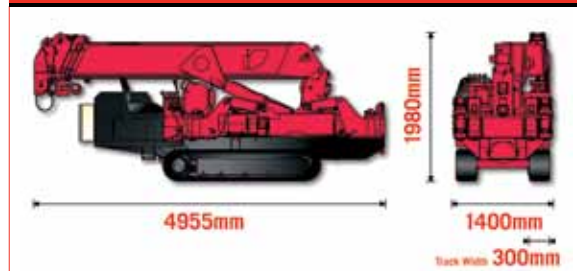
Lifting capacity up to 16.48m 500kg (boom stage 5)*
over 16.48m 280kg (boom stage 6)*

Length 800mm

Weight 20kg

Tilt angles 0°, 20°, 40°, 60°

Dimensions



* Please note: The URW-547 lifting capacity information is based on boom stages, not boom sections.