

# AIR SCREWDRIVER & WRENCH

INDUSTRIAL

ISO 9001

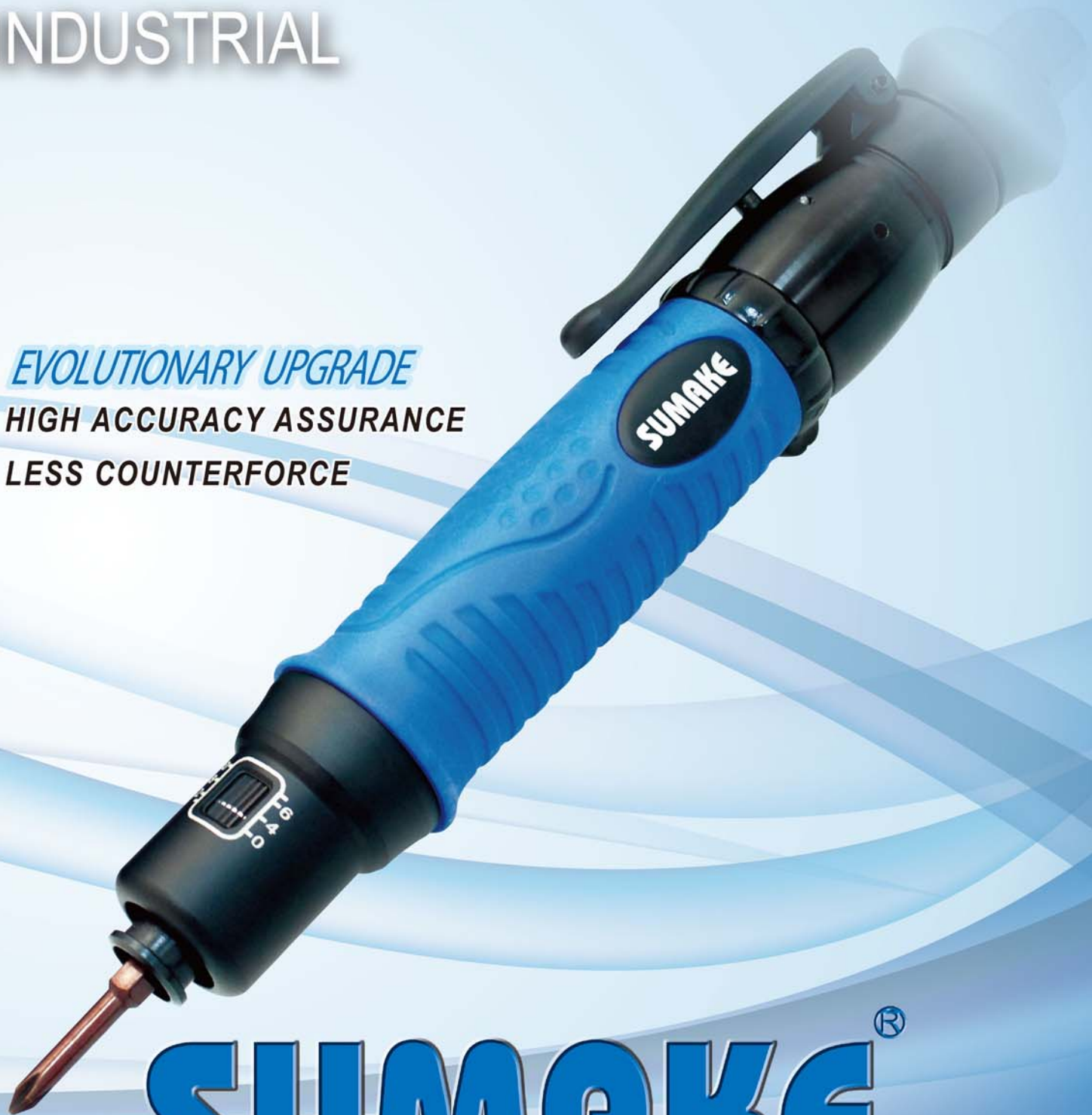


Certificate TW04/02301QA

*EVOLUTIONARY UPGRADE*

**HIGH ACCURACY ASSURANCE**

**LESS COUNTERFORCE**



# SUMAKE®

MAKE JOBS BETTER THAN EVER

## An Evolutionary Upgrade of Full Auto Shut-off Air Screwdriver



| Model No.    | Free Speed (r.p.m.) | Torque range $\pm 3\%$ |         | Noise ( $\pm 2$ dB) |
|--------------|---------------------|------------------------|---------|---------------------|
|              |                     | Nm                     | Kgf-cm  |                     |
| FP(FL/FA)002 | 1000                | 0.05-0.22              | 0.5-2.2 | 68                  |
| FP(FL/FA)010 | 1000                | 0.1-1                  | 1-10    | 68                  |
| FP(FL/FA)020 | 2200                | 0.3-2                  | 3-20    | 72                  |
| FP(FL/FA)025 | 1800                | 0.3-2.5                | 3-25    | 72                  |
| FP(FL/FA)035 | 1000                | 0.5-3.5                | 5-35    | 72                  |
| FP(FL/FA)045 | 800                 | 0.8-4.5                | 8-45    | 72                  |
| FP(FL/FA)050 | 550                 | 1-5                    | 10-50   | 72                  |
| FP(FL/FA)060 | 2200                | 1-6                    | 10-60   | 76                  |
| FP(FL/FA)075 | 1000                | 1.2-7.5                | 12-75   | 76                  |
| FP(FL/FA)110 | 550                 | 3-11                   | 30-110  | 76                  |
| FP(FL/FA)180 | 300                 | 3-18                   | 30-180  | 76                  |
| FP(FL/FA)280 | 250                 | 5-28                   | 50-280  | 76                  |

## Oil Free Full Auto Shut-off Air Screwdriver

High Torque & Low Noise



| Model No.        | Free Speed (r.p.m.) | Torque range $\pm 2\%$ |         | Noise ( $\pm 2$ dB) |
|------------------|---------------------|------------------------|---------|---------------------|
|                  |                     | Nm                     | Kgf-cm  |                     |
| FPF(FLF/FAF)4002 | 1000                | 0.05-0.22              | 0.5-2.2 | 67                  |
| FPF(FLF/FAF)4012 | 1000                | 0.1-1.2                | 1-12    | 67                  |
| FPF(FLF/FAF)4020 | 2200                | 0.3-2                  | 3-20    | 67                  |
| FPF(FLF/FAF)4025 | 1800                | 0.3-2.5                | 3-25    | 67                  |
| FPF(FLF/FAF)4035 | 1000                | 0.5-3.5                | 5-35    | 67                  |
| FPF(FLF/FAF)4050 | 800                 | 1-5                    | 10-50   | 67                  |
| FPF(FLF/FAF)4090 | 1000                | 1.5-9                  | 15-90   | 72                  |
| FPF(FLF/FAF)4120 | 550                 | 3-12                   | 30-120  | 72                  |
| FPF(FLF/FAF)4200 | 300                 | 3-20                   | 30-200  | 72                  |
| FPF(FLF/FAF)4280 | 250                 | 5-28                   | 50-280  | 72                  |



One pulse with  $\pm 3\%$  low deviation (Pat. No. 149380), **MSC** cross-path patent clutch system.



**Torque Cover**  
To avoid the adjustment by operator and easy to mark the torque through the window.



**External Torque Adjustment Ring** Turn right to increase and left to decrease.



Attached 2 pcs high quality **T.I.C.N.** bits which electroplated with durable material (Hv1800 2-3u) for longer operation. Single(9mm), Double(12mm).



(One-handed operation) Turn and change the rotary direction.



**Torque Rings**  
SUMAKE Color Rings give you an easily visible torque marking system at a glance. Choice the color for each torque level used on your assemble line.



High technologic patent **MCL** motor with more 30% power than general type. (Pat. No. 151110)



**Comfort**  
Uniquely sharpened soft resin for ergonomic grip "Top Wave" ergonomic design, best balance and easy to grip. The grip made thermoplastic elastomer, the best material so far, with good touch and anti-glossy feature.



Wide-ranging torque and low vibration.

**Speediness**  
Operator can change the bit rapidly by pull the bit sleeve.

**Our technical Air Screwdriver**  
FPF4280 made by high technologic motor output wide-ranging torque 5-28N.m, Noise only 74dBA & Light Weight 900g

## Full-auto Shut Off Air Open-end Wrench

### Features:

- Extremely easy and useful to tighten things up in limited spaces, for example: compressor assembly, refrigerator pipes or automobile breaking system pipes and so on.
- Variety gear socket size to fits in different assembly situation
- Ergonomics design to be easy grip with less fatigue and the reduced thickness of the head also good for the operators work in any circumstance.



Trumpt-type muffler desing for easy grip.

#### HOW(R)08-6~08-12

3~8 Nm; Gear Socket 6~12mm; Head size: 42mm

#### HOW(R)17-6~17-12

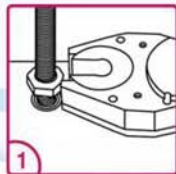
5~17 Nm; Gear Socket 6~12mm; Head size: 42mm

#### HOW(R)17-13~17-14

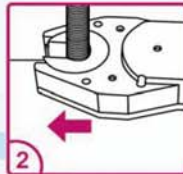
5~17 Nm; Gear Socket 13~14mm; Head size: 56mm

#### HOW(R)24-15~24-22

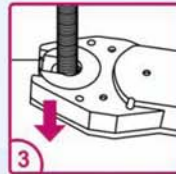
7~24 Nm; Gear Socket 15~22mm; Head size: 56mm



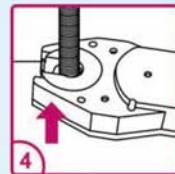
1 Press lever for releasing, back to the open position.



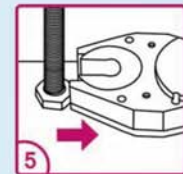
2 Slide on the fastener



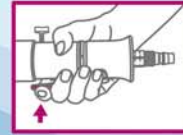
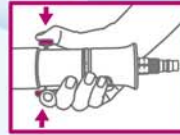
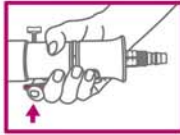
3 Press the button and lever at same time for tightening up.



4 Slide off the tightened fastener to free the tool.



5 Press the lever to release, back to the open position.



## Oil-Free Shut Off Air Wrench 3/8" Square Anvil

### Features:

- Extended body for comfortable operation and less reaction.
- Oil-free motor, the power keeps stable at top capability without any oil injection.
- With 3<sup>rd</sup> generation patented cross-path MSC clutch and special mechanical structure, the tool accords with ISO5393 B class CPK value torque deviation request(CPK value > 1.33).
- The patented one pulse clutch system has also the feature of low vibration (less than 2.5ms<sup>2</sup>), less torque deviation(±3%) and wide torque range.

**LESS COUNTERFORCE**



High Torque

#### HAWFHE200H

5~20 Nm; 1,200rpm

#### HAWFHE250

5~25 Nm; 430rpm

#### HAWFHE400

10~40 Nm; 250rpm

#### HAWFHE600

35~60 Nm; 180rpm



2013C-AD

# Industrial Air Screwdriver



\*Air Inlet could be 3 way option.

## Push start / Push-Trigger start shut off air screwdriver



**APP35** 3-20Kgf-cm(0.3-2Nm) 2200rpm  
**APP38** 3-25Kgf-cm(0.3-2.5Nm) 1800rpm  
**APP41** 5-35Kgf-cm(0.5-3.5Nm) 1000rpm  
**APP47** 10-50Kgf-cm(1-5Nm) 550rpm  
 <Small Body> -Light Weight-  
 Noise Level 72



**APP48** 10-60Kgf-cm(1-6Nm) 2200rpm  
**APP55** 12-75Kgf-cm(1.2-7.5Nm) 1000rpm  
**APP60** 30-110Kgf-cm(3-11Nm) 550rpm  
**APP65** 30-180Kgf-cm(3-18Nm) 300rpm  
**APP68** 50-280Kgf-cm(5-28Nm) 250rpm  
 <Standard Body>  
 Noise Level 76

## Trigger start shut off air screwdriver



**ABP35** 3-20Kgf-cm(0.3-2Nm) 2200rpm  
**ABP38** 3-25Kgf-cm(0.3-2.5Nm) 1800rpm  
**ABP41** 5-35Kgf-cm(0.5-3.5Nm) 1000rpm  
**ABP47** 10-50Kgf-cm(1-5Nm) 550rpm  
 <Small Body> -Light Weight-  
 Noise Level 72



\*Model AWP48 ~ AWP68  
 With 3/8" Square driver



**ABP48** 10-60Kgf-cm(1-6Nm) 2200rpm  
**ABP55** 12-75Kgf-cm(1.2-7.5Nm) 1000rpm  
**ABP60** 30-110Kgf-cm(3-11Nm) 550rpm  
**ABP65** 30-180Kgf-cm(3-18Nm) 300rpm  
**ABP68** 50-280Kgf-cm(5-28Nm) 250rpm  
 <Standard Body>  
 Noise Level 76

## Push start / Push-Trigger start Cushion air screwdriver



**ACP39** 5-50Kgf-cm(0.5-5Nm) 1600rpm  
**ACP45** 5-70Kgf-cm(0.5-7Nm) 750rpm  
 <Small Body> -Light Weight-  
 Noise Level 72  
**Option:**

\*ACPN is for trigger start (w/o lock pin).  
 \*ACPT is for push trigger to start (w/o lock pin) Ex. ACPT39.  
 \*ACSP is push start. Standard air inlet is from only rear. Other air inlet direction please specify (w/o lock pin).



**ACP48** 10-70Kgf-cm(1-7Nm) 1700rpm  
**ACP58** 10-30Kgf-cm(1-13Nm) 750rpm  
 <Standard Body>  
 Noise Level 76

## Trigger start Direct air drill



**ADDN26** 6mm(1/4") 2900rpm  
 <Small Body> -Light Weight-



**ADDN39** 10mm(3/8") 1600rpm  
 <Small Body> -Light Weight-



**ADDN48** 10mm(3/8") 1700rpm  
**ADDN58** 10mm(3/8") 750rpm  
**ADDN458** 13mm(1/2") 750rpm  
 <Standard Body>



\*Side handle for ADDN458 type

### SUMAKE Industrial Co., Ltd.

4F, No.351, Yangguang St., Neihu District, Taipei, Taiwan, Zip:114-91  
 Tel: 886-2-2659-3500 Fax: 886-2-2659-3700 <http://www.sumake.com> e-mail: [sales@sumake.com](mailto:sales@sumake.com)