

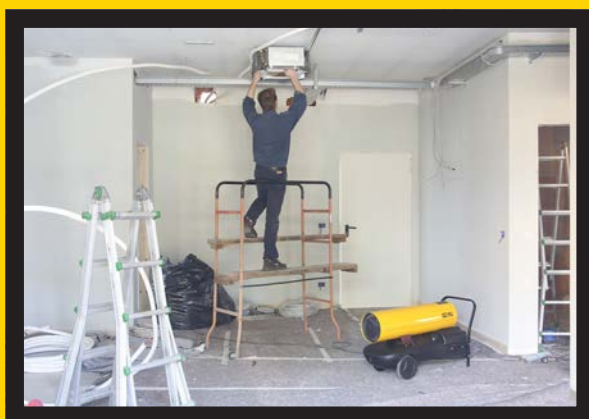
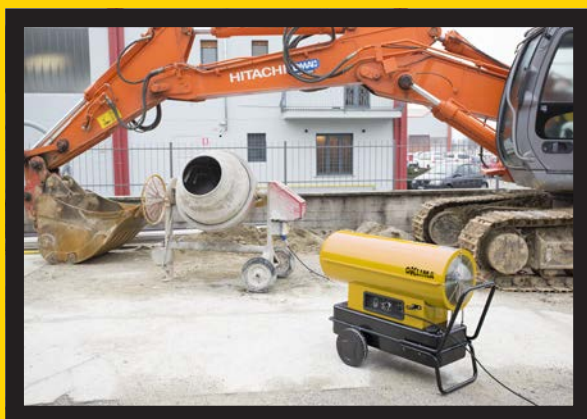
GENERATORI MOBILI D'ARIA CALDA A COMBUSTIONE DIRETTA  
*DIRECT COMBUSTION MOBILE SPACE HEATERS*



SD









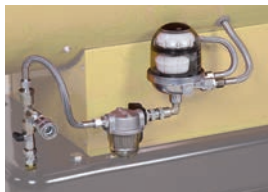


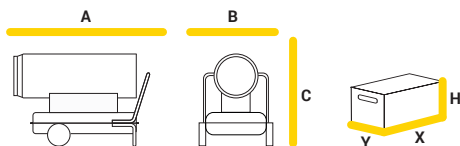
- OK** Bruciatore automatico di gasolio
- OK** Controllo elettronico di fiamma
- OK** Termostato di surriscaldamento
- OK** Presa per collegamento a termostato, umidostato o timer (SD 130, SD 170, SD 240, SD 380)
- OK** Cavo alimentazione elettrica (1,5 m) con spina
- OK** Camera di combustione in acciaio inox AISI 430
- OK** Post-ventilazione temporizzata di raffreddamento della camera di combustione
- OK** Tubi alimentazione gasolio in gomma resistente agli idrocarburi con rivestimento in maglia rinforzante tessile (SD 70, SD 130, SD 170), metallica (SD 240, SD 380)
- OK** Serbatoio in polietilene antiurto (SD 70, SD 130, SD 170), in acciaio (SD 240, SD 380)
- OK** Tappo chiusura serbatoio a baionetta
- OK** Tappo di scarico combustibile dal serbatoio



- OK** Automatic built-in oil burner
- OK** Safety thermostat
- OK** Set to be connected to a thermostat or a humidostat or a timer (SD 130, SD 170, SD 240, SD 380)
- OK** Power cord (1,5 m) with plug
- OK** AISI 430 stainless steel combustion chamber
- OK** Automatic post ventilation of unit
- OK** Fuel feed lines in hydrocarbon resistant rubber, white reinforced textile (SD 70, SD 130, SD 170) or metal sheath (SD 240, SD 380)
- OK** Tank in tough hydrocarbon resistant polythene (SD 70, SD 130, SD 170) or steel (SD 240, SD 380)
- OK** Bayonet-type fuel tank cap
- OK** Fuel tank drain plug

ACCESSORI A RICHIESTA / ACCESSORIES ON DEMAND

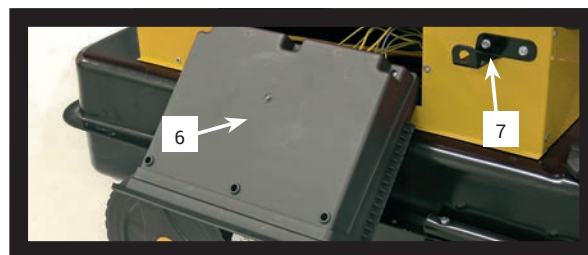
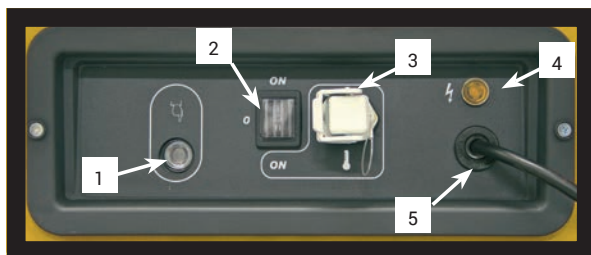
<p>INDICATORE DI LIVELLO FUEL LEVEL GAUGE</p>	<p>FILTRO RIEMPIMENTO SERBATOIO GASOLIO FUEL TANK FILLER FILTER</p>	<p>STAFFE SOLLEVAMENTO (4 PEZZI) LIFTING BRACKETS (4 PIECES)</p>
		
<p>Mod. SD 130 - SD 170 - SD 240 - SD 380 Cod. 02AC508</p>	<p>Mod. SD 130 - SD 170 - SD 240 - SD 380 Cod. 02AC556</p>	<p>Mod. SD 240 - SD 380 Cod. 02AC511</p>
<p>KIT RUOTE PNEUMATICHE Ø 250 mm PNEUMATIC WHEELS KIT Ø 250 mm</p>	<p>TERMOSTATO AMBIENTE +5/+30°C CON CAVO L=10 m E SPINA 90° ROOM THERMOSTAT +5/+30°C CABLE 10 m, PLUG 90°</p>	<p>TERMOSTATO AGRICOLTURA/CANTIERE -5/+50°C CON CAVO L=10 m E SPINA 90° HEAVY DUTY THERMOSTAT -5/+50°C CABLE 10 m, PLUG 90°</p>
		
<p>Mod. SD 240 Cod. 02AC598</p>	<p>Cod. 02AC581</p>	<p>Cod. 02AC582</p>
<p>Mod. SD 380 Cod. 02AC599</p>		
<p>CARRELLO, MANIGLIA E RUOTE TROLLEY, HANDLE AND WHEELS</p>	<p>FILTRO GASOLIO RISCALDANTE PRE-HEATED FUEL FILTER</p>	<p>KIT COLLEGAMENTO SERBATOIO ESTERNO MONOTUBO CON DE-AERATORE SINGLE-PIPE EXTERNAL FUEL TANK CONNECTION KIT WITH DE-AERATOR</p>
		
<p>Mod. SD 70 Cod. 02AC596</p>	<p>Mod. SD 240 - SD 380 Cod. 02AC548</p>	<p>Mod. SD 240 - SD 380 Cod. 02AC632</p>



PESI E DIMENSIONI MACCHINA WEIGHTS AND DIMENSIONS MACHINE					IMBALLO PACKAGING			
MOD	A	B	C	Netto/Net	X	Y	H	Lordo/Gross
	(mm)	(mm)	(mm)	(kg)	(mm)	(mm)	(mm)	(kg)
SD 70	720	300	450	20	760	320	425	23
SD 130	1.075	440	615	25	1.050	400	520	29
SD 170	1.075	440	630	38	1.050	400	580	45
SD 240	1.200	555	860	58	1.200	480	900	78
SD 380	1.492	670	1.005	86	1.690	620	1.050	111

		SD 70	SD 130	SD 170	SD 240	SD 380
codice - code		02SD121	02SD102	02SD103	02SD104	02SD105
potenza term. nomin. Hi - rated heating power	Hs [kW] (kW-kcal/h)	21,4 18.369 - 73.110	38,4 33.043 - 131.512	49 42.173 - 167.850	69,3 59.565 - 237.067	111,1 95.507 - 380.331
rendimento - heat efficiency	(%)	100	100	100	100	100
portata aria - air flow	(m³/h)	350	605	1.400	2.500	4.600
temperatura aria - air temperature	(a 20° C)	170	177	97	120	68
consumo - fuel consumption	(kg/h)	1,69	3,04	3,88	5,48	8,85
capacità serbatoio - tank capacity	(l)	17	42	42	65	105
potenza elettrica - power consumption 230 V	(W)	200	232	400	598	1.170
alimentazione elettrica - electrical power	(V, ~, Hz)	230, 1, 50	230, 1, 50	230, 1, 50	230, 1, 50	230, 1, 50
quantità per pallet - pallet quantities	(pz - pcs)	20	12	9	1	1

## Quadro elettrico / Electrical control board



### Legenda

- 1 Pulsante di reset con spia di blocco (rosso), funzionamento (verde) e stand-by (arancione)
- 2 Interruttore di comando a tre posizioni:
  - posizione 0 per macchina ferma
  - posizione 1 per macchina funzionante in "continuo"
  - posizione 2 per macchina funzionante con termostato ambiente, umidostato, timer
- 3 Presa per termostato ambiente, umidostato, timer
- 4 Spia di presenza tensione
- 5 Uscita cavo di linea
- 6 Coperchio (SD 240, SD 380, SE 200, SE 300)
- 7 Supporto cavo elettrico

### Legend

- 1 Reset button with block (red), working (green) and stand-by (orange) indicator light
- 2 Three way control switch:
  - position 0 for stop
  - position 1 for "continuous" on
  - position 2 for on with ambient thermostat, humidostat, timer
- 3 Socket for ambient thermostat, humidostat, timer
- 4 Voltage warning light (connected to the mains)
- 5 Power cord outlet
- 6 Plastic cover (SD 240, SD 380, SE 200, SE 300)
- 7 Power cord bracket