



*lateral mower* **MAXIMA**



*long reach  
mower*







long reach  
mower

## Application

MAXIMA lateral mower is designed to cut grass, weeds, shrubbery and similar vegetation along roadway curbstones, water canals and other surfaces. The primary application of this mower is a long reach is required for successful mowing: overpasses and water canals.

## Technical description

Mower elements are manufactured in special fine grain steel S690QL. The telescopic crane is mounted onto specially built mounting frame on the tractor, while a separate hydraulic unit is mounted onto the rear tractor levers. It uses its own two-circuit hydraulic unit with a separate oil tank for its work. One hydraulic circuit is used to manage the movements of the crane while the other one provides the drive for the mowing head's hydro-motor. Depending on customer's particular needs and wishes, the mower can be equipped with three different hydraulic systems (gear pumps, piston-axial pumps in an open hydraulic circuit, or piston-axial pump with a variable flow rate in a closed hydraulic circuit).

The hydraulic crane and mowing head are controlled via an ergonomically designed control stick from within the tractor cabin. Full proportional control (FPC – Sauer Danfoss) ensures smooth operation of the machine by buffering sudden jerks and provides simultaneous operation of hydraulic cylinders.

While in transport position, the mower is fixed to the tractor's rear end. Standard mower types are featured in the inserted table.

MAXIMA lateral mower standard equipment features a full proportional control (FPC – Sauer Danfoss), an automatic weight relief system – easy control system (ECS), mounting frame on the tractor, hydraulic power unit with two-circuit hydraulic system (gear pumps) and hydraulic telescopic crane.



### Cylinder for the mower rotation

Besides rotating the mower into the working position, it also serves as a safety element when the mowing head encounters an obstacle.



### Mounting frame

It is made separately for each particular tractor and is used to fix the lateral crane mower to the tractor.



### Hydraulic unit

It features a two-circuit hydraulic system and electro-hydraulic proportional drive system, a carrying frame attached to the tractor's rear hydraulic levers and a separate oil tank with 180 liter volume. The built-in multiplier provides the drive to the hydraulic pumps. Depending on customer's particular needs and wishes, the machine can be equipped with different types of control and hydraulic systems.

### Auxiliary wheel

Since it features a wide scope of mowing (up to 10 m) and in order to enhance its stability while engaged, the mower's standard equipment includes a large payload auxiliary wheel. This enables high stability of the device in operation.

### Telescopic hydraulic crane

The design of the telescopic crane allows a long working reach of 8, 9 or 10 m from the center of the tractor and compact size in transport position.

type	weight * [kg]	working reach [mm]	mowing width [mm]	working velocity [km/h]
MAXIMA 8000	1850	8000	1000 - 1300	0,1 do 8
MAXIMA 9000	1950	9000		
MAXIMA 10000	2000	10000		

### Mowing head

Standard mower equipment features a mowing head with light blades to cut grass and other vegetation with the diameter of up to 1.5 cm. Depending on customer's particular needs, the mower can be equipped with a mowing head with mid-weight or heavy blades.



\*weight of the mower with the mounting frame and TORNADO 1300 L mowing head

lateral mower **MAXIMA**



## Additional equipment

Depending on customer's needs and wishes, the hydraulic unit can be equipped with:

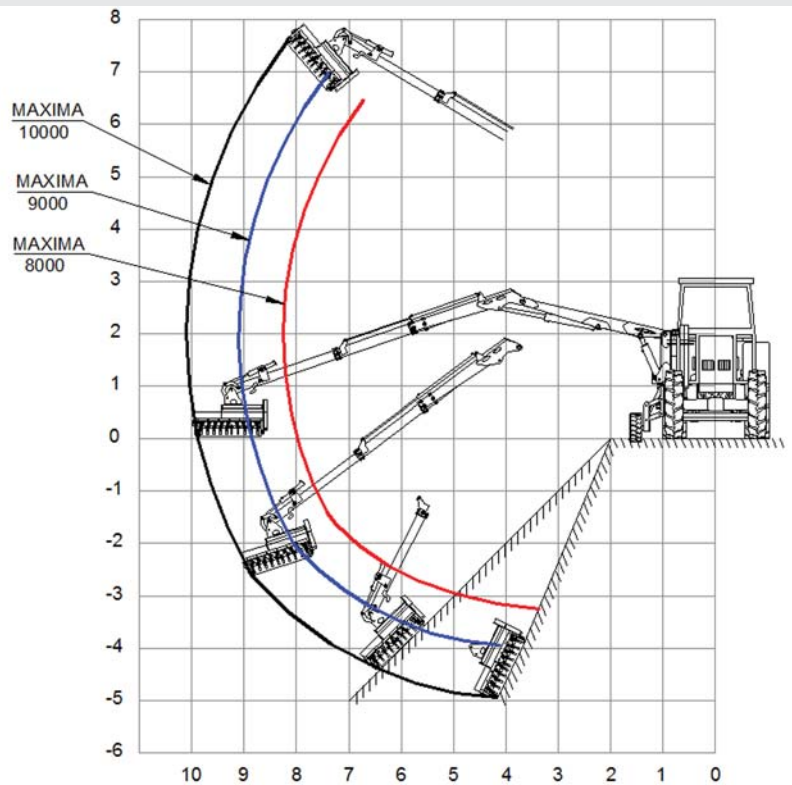
- a piston axial hydraulic pump which provides the drive for the working tool in the open hydraulic circle, and a gear pump for the crane operation;
- a piston axial hydraulic pump with variable flow which provides the drive for the working tool in the closed hydraulic circle, and a gear pump for the crane operation;

The mower can also be equipped with the following system:

- **HeadCam** - working tool visual tracking system equipped with a camera built on the mower crane and a display placed in the tractor cabin which allows better overview of the working tool and prompt identification of obstacles

Depending on customer's needs and wishes mower can be equipped with the following working tools:

- a mowing head with light blades with the width of 1000 or 1300 mm;
- a mowing head with mid-weight blades with the width of 1000 or 1300 mm;
- a mowing head with heavy blades with the width of 1300 mm;
- HYDRA mowing head with universal rotor ,capable of fitting 3 types of blades (light blades for up to 15 mm, mid-weight blades for up to 30 mm and heavy weight blades for up to 50 mm of vegetation in diameter);



## Mounting

Lateral mower is designed for mounting onto heavy tractors which meet the requirements regarding load capacity and weight. The tractor has to have a minimum weight of 5500 – 6500 kg, engine power rating of 100 kW and rear PTO shaft with 540 and/or 1000 rpm.

The mower is mounted onto the frame manufactured specifically for the tractor. In order to mount this type of mower, customer needs to transport the tractor into RASCO's workshop or let RASCO make the choice of the tractor keeping in mind the customer's

- Kolodvorska 120 b, HR-48361 Kalinovac
- tel: +385 (48) 883 112; fax: +385 (48) 280 146
- e-mail: [rasco@rasco.hr](mailto:rasco@rasco.hr)
- [www.rasco.hr](http://www.rasco.hr)



Dealer

