



# I4C IMPACT CRUSHER

The McCloskey I4C heavy duty compact impact crusher combines mobility, power and new features to deliver the highest production across applications and materials.

## FEATURES

- ✓ Powerful 1050mm (41.3") diameter x 1125mm (44.3") wide Impactor
- ✓ Aggressive Blow Bar design with larger contact area for high capacity crushing
- ✓ Asymmetric Feeder integrated into single feeder/hopper configuration
- ✓ Tough-Flex heavy duty conveyor belt for long lasting performance
- ✓ Efficient and simple operation



The I4C is in a class of its own, bringing the productivity of an 1125mm (44.3") impactor to a compact footprint for maximum power and maneuverability.


The crusher's design has ease of access in mind, with an excellent layout for operation, maintenance and service.

Advanced clutch technology delivers reduced fuel consumption, and less maintenance while increasing safety and productivity.

With its ease of operation and efficient hydraulics, the I4C heavy duty track mounted crusher is sure to make an impact across a variety of materials and applications.

## TECH SPECS

### I4C RECIRC

<b>Engine</b>	280kW (375 Hp)
<b>Transport</b>	
<b>Height</b>	3.2m (10' 6")
<b>Length</b>	15.798m (51' 10")
<b>Width</b>	3.0m (9' 10" )
<b>Rotor</b>	1050mm (41.3")
<b>Diameter</b>	
<b>Rotor</b>	1125mm (44.3")
<b>Width</b>	
<b>Stockpile</b>	3753mm (12'- 4")
<b>Height</b> (Main)	

## OPTIONS

4 Full Height Blow Bars | Grizzly Blanking Plates |  
Feeder Punch Plate | Gantry and Hoist |  
Single or Twin Pole Magnet |  
Wind shifter | Side conveyor  
Work lights | Refueling pump



## FEATURES



3 crush zones with optional 4th strike zone combined with an aggressive blow bar and apron design and a 4 bar variable speed rotor deliver high impact.



The I4C features a 3660mm x 1525mm (12' x 5') two bearing single deck screen box.

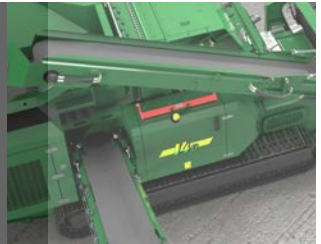


Feeder with 1000mm x 712mm  
Hopper with 1500mm x 1175mm  
Hopper with 1500mm x 1175mm  
Hopper with 1500mm x 1175mm

Asymmetric feeder and integrated hopper increase throughput.



The I4C boasts flexibility as well; it can convert to a recirculating impactor in just a few hours.





# I4C IMPACT CRUSHER

The perfect solution for projects with small footprints but big requirements.

## APPLICATIONS



**Aggregates  
& Quarrying**



**Mining  
& Minerals**



**Construction  
& Demolition**



**Concrete &  
Asphalt  
Recycling**