



*snow plough* **BSP**



*snow plough for  
motorways*







snow plough for motorways

### Purpose

BSP lateral snow ploughs are used for clearing snow off of multilane motorways.

### Technical description

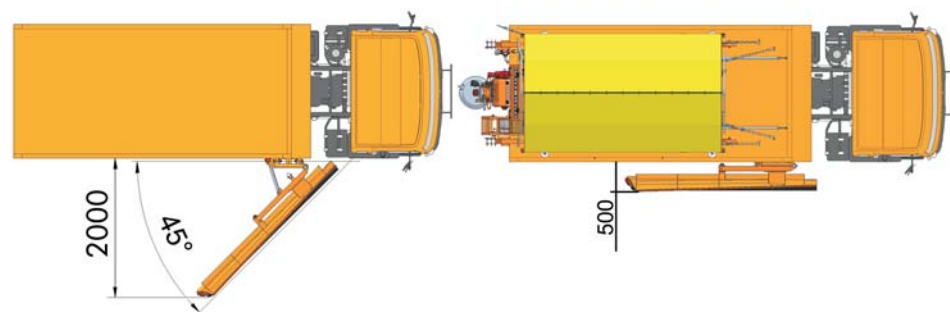
BSP lateral snow ploughs can be mounted on right side of vehicles with front-mounted snow plough to improve efficiency i.e. clearance width (above 5 m).

BSP is a single-section snow plough with scraper strips on swivel mechanism for safe obstacle crossing.

BSP snow ploughs can cross obstacles that are up to 60 mm in height. During transport, the BSP snow plough is lifted in upper position and swiveled to the side of the vehicle.

BSP is equipped with swiveling mechanism which enables a clearing angle of 45°. Lateral snow plough is manufactured in dimensions shown in the table.

Snow plough has axial tilt capability, enabling better adjustment to the surface being cleaned.



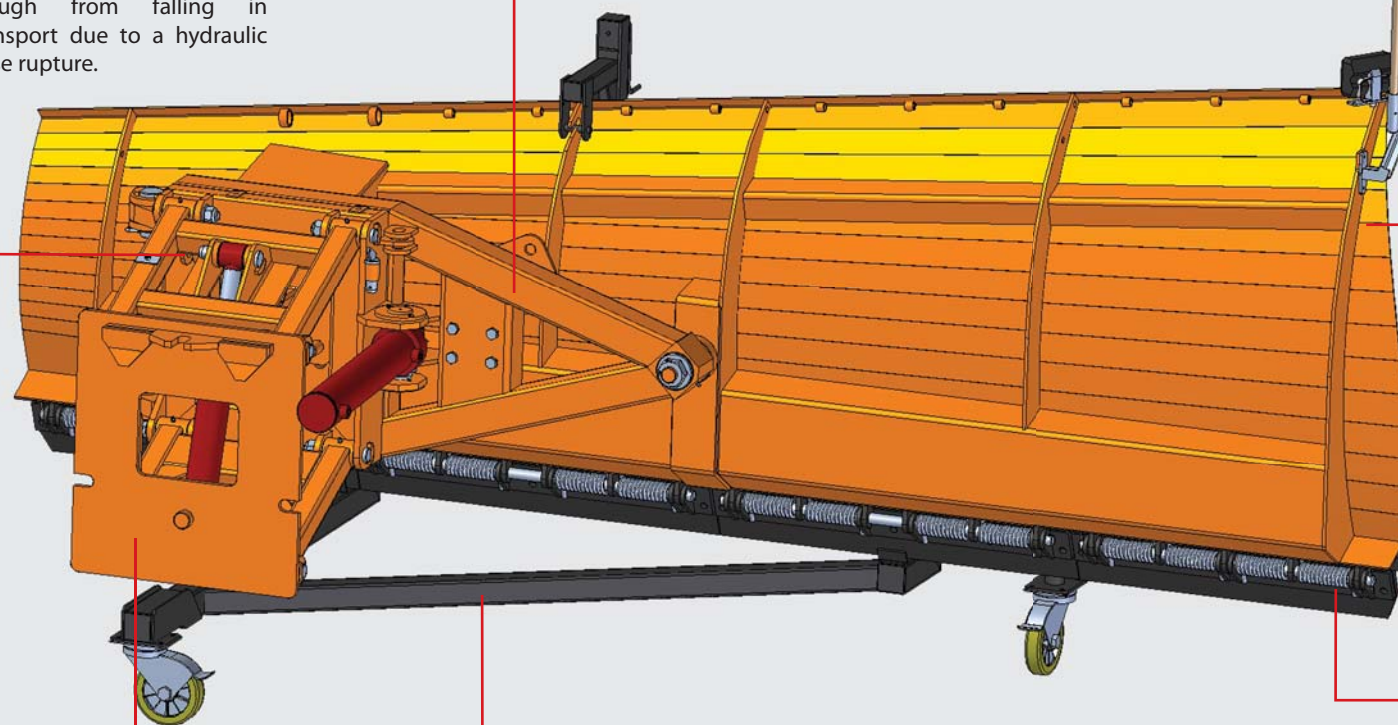
### System for swiveling and axial tilt

Snow plough swiveling from transport to clearing position and back is done by hydraulic cylinder. Axial tilt is achieved by rotating around the central bolt.



### Mechanical safety feature in transport position

Standard. Secures the snow plough from falling in transport due to a hydraulic hose rupture.



### Attachment plate

Attachment plate is manufactured in accordance with RASCO factory standard and is compatible with RASCO side mounting plates on trucks.

The attachment plate can be adapted to side mounting plate of other manufacturer on request.

### Mounting / dismounting cart

Standard. Allows easy mounting and dismantling of the lateral snow plough.



### Outline lights

Standard. Consists of outline LED light, strobe light and marking flag. Strobe light is automatically engaged when snow plough is in clearing position.

### Section

Robust section design ensures safe obstacle crossing and its curve ensures excellent snow casting.



### Scraping strips

High quality wear resistant steel in standard.

Scraper strips are mounted on a swivel mechanism for safe obstacle crossing. Once the obstacle is cleared, scraper strip returns to a neutral position.

type	weight * [kg]	snow plough width [mm]	clearance width [at 45°]	No. of scraper strips	section height (mm): inner / outer	max. clearance width in combination with front snow plough in 3.6 meter size (mm)
BSP 2.7	600	2700	1900	3	850 / 1250	4500
BSP 3.4	700	3400	2400	4	850 / 1250	5000

\* snow plough weight depends on desired options



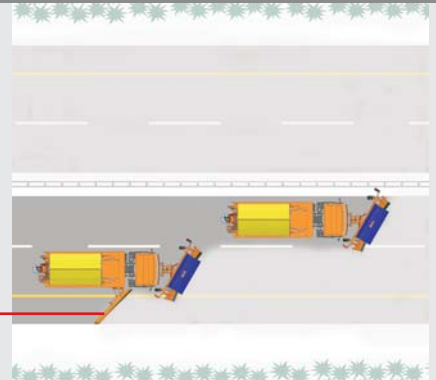
## Additional equipment

### Hydraulic safety feature in transport position

Secures the snow plough from falling in transport due to a hydraulic hose rupture.



Picture illustrates BSP in its operational position on motorway.



## Mounting

BSP lateral snow ploughs can be mounted on right side of trucks with necessary engine power. A truck used for BSP snow plough should have enough free space on the right side for the side mounting plate and a proper hydraulic system for the front and lateral snow plough.

It is recommended that the snow plough is mounted on the vehicle by the manufacturer or by an authorized workshop according to manufacturer's instructions.

- Kolodvorska 120 b, HR-48361 Kalinovac
- tel: +385 (48) 883 112; fax: +385 (48) 280 146
- e-mail: [rasco@rasco.hr](mailto:rasco@rasco.hr)
- [www.rasco.hr](http://www.rasco.hr)



Dealer