

KOMATSU

HB365LC-3

EU Stage IV Engine

Hybrid

HYDRAULIC EXCAVATOR

PRELIMINARY



HB365

ENGINE POWER

202 kW / 271 HP @ 1.950 rpm

OPERATING WEIGHT

36.400 - 37.350 kg

BUCKET CAPACITY

max. 2,66 m³

Walk-Around

OUTSTANDING PRODUCTIVITY & FUEL ECONOMY

Drastically reduced fuel consumption

Improved Komatsu Hybrid System

- Proven technology
- Reliable and durable hybrid system components
- Electric swing to capture and regenerate energy
- Massive reduction in fuel consumption & CO₂ emissions

Powerful and Environmentally Friendly

- Low consumption EU Stage IV engine
- Up to 53 kW extra electric power
- Adjustable Eco-gauge and auto idle stop



Images may display optional equipment or specifications not available in your area.

HB365LG-3

Fuel consumption

Based on typical work pattern collected via KOMTRAX™

Reduced by **30%** / **22%** / **20%**
(vs. PC350-8) (vs. PC360-10) (vs. PC360-11)

First-Class Comfort

- Ultra-low noise levels
- Fully air-suspended operator station
- Widescreen monitor

Safety First

- Komatsu SpaceCab™
- Improved camera system
- Neutral position detection system

Quality You Can Rely On

- Komatsu-quality components
- Maintenance free Hybrid components with a 5 years /10.000 hrs warranty

KOMTRAX™

- Komatsu Wireless Monitoring System
- 3G mobile communications
- Integrated communication antenna
- Increased operational data and reports



In Komatsu's unique hybrid system, the electric swing motor-generator captures and regenerates energy as the upper structure slows down and converts it into electric energy. The regenerated energy is stored in the ultra-capacitor and used by the generator-motor to assist the engine when it needs to accelerate. Thus, the hybrid system reduces fuel consumption significantly.



The electric swing motor-generator



Komatsu HB365LC-3 Hybrid: As comfortable as you can expect from any Komatsu excavator.



Complimentary maintenance program for customers

ENGINE

Model	Komatsu SAA6D114E-6
Type	Common rail direct injection, water-cooled, emissionised, turbocharged, after-cooled diesel
Engine power	
at rated engine speed	1.950 rpm
ISO 14396	202 kW/271 HP
ISO 9249 (net engine power)	201 kW/269 HP
No. of cylinders	6
Bore × stroke	114 × 144,5 mm
Displacement	8,85 l
Air filter type	Double element type with monitor panel dust indicator and auto dust evacuator
Cooling	Suction type cooling fan with radiator fly screen

HYDRAULIC SYSTEM

Type	HydrauMind. Closed-centre system with load sensing and pressure compensation valves
Additional circuits	2 additional circuits with proportional control can be installed
Main pump	2 variable displacement piston pumps supplying boom, arm, bucket and travel circuits
Maximum pump flow	2 × 267,5 l/min
Relief valve settings	
Implement	390 kg/cm ²
Travel	390 kg/cm ²
Pilot circuit	33 kg/cm ²

SWING SYSTEM

Type	Electric motor driving through planetary triple reduction gearbox
Swing lock	Electrically actuated wet multidisc brake integrated into swing motor
Swing speed	0 - 9,5 rpm
Swing torque	106 kNm

UNDERCARRIAGE

Construction	X-frame centre section with box section track frames
Track assembly	
Type	Fully sealed
Shoes (each side)	48
Tension	Combined spring and hydraulic unit
Rollers	
Track rollers (each side)	8
Carrier rollers (each side)	2

ENVIRONMENT

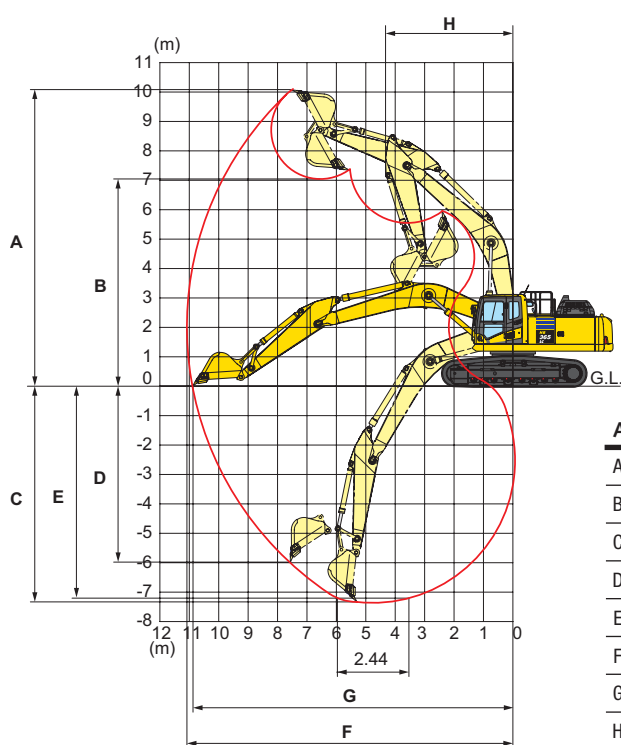
Engine emissions	Fully complies with EU Stage IV exhaust emission regulations
Noise levels	
LwA external	100 dB(A) (2000/14/EC Stage II)
LpA operator ear	68 dB(A) (ISO 6396 dynamic test)
Vibration levels (EN 12096:1997)*	
Hand/arm	≤ 2,5 m/s ² (uncertainty K = 0,37 m/s ²)
Body	≤ 0,5 m/s ² (uncertainty K = 0,17 m/s ²)

* For the purpose of risk assessment under directive 2002/44/EC, please refer to ISO/TR 25398:2006.

OPERATING WEIGHT (APPR.)

HB365LC-3		
Triple grouser shoes	Operating weight	Ground pressure
600 mm	36.400 kg	0,69 kg/cm ²
700 mm	36.780 kg	0,60 kg/cm ²
800 mm	37.160 kg	0,53 kg/cm ²
850 mm	37.350 kg	0,50 kg/cm ²

Operating weight, including specified work equipment, 3,2 m arm, 1.700 kg bucket, operator, lubricant, coolant, full fuel tank and the standard equipment.



ARM LENGTH	2,2 m	2,6 m	3,2 m	4,0 m
A Max. digging height	9.580 mm	9.965 mm	10.210 mm	10.550 mm
B Max. dumping height	6.595 mm	6.895 mm	7.110 mm	7.490 mm
C Max. digging depth	6.355 mm	6.705 mm	7.380 mm	8.180 mm
D Max. vertical wall digging depth	5.120 mm	5.880 mm	6.480 mm	7.280 mm
E Max. digging depth of cut for 2,44 m level	6.130 mm	6.520 mm	7.180 mm	8.045 mm
F Max. digging reach	10.155 mm	10.550 mm	11.100 mm	11.900 mm
G Max. digging reach at ground level	9.950 mm	10.355 mm	10.920 mm	11.730 mm
H Min. swing radius	4.390 mm	4.400 mm	4.310 mm	4.320 mm