

# KOMATSU

## **PC360LC-11** **PC360NLC-11**

*EU Stage IV Engine*

**HYDRAULIC EXCAVATOR**

**PRELIMINARY**



**PC360**

**ENGINE POWER**

202 kW / 271 HP @ 1.950 rpm

**OPERATING WEIGHT**

35.800 - 36.850 kg

**BUCKET CAPACITY**

max. 2,66 m<sup>3</sup>

# Walk-Around

## INCREASED FUEL EFFICIENCY AND ENVIRONMENTAL PERFORMANCE

### *Powerful and environmentally friendly*

- Low consumption EU Stage IV engine
- Fuel-saving engine and hydraulic technology
- Adjustable Eco-gauge and auto idle stop
- Reduced wastage

### *First-class operator comfort*

- Fully air suspended operator station
- Low noise design
- Low vibration levels
- Improved widescreen hi-res display monitor
- Improved operator convenience



PC360LC/NLG-11

*images may display optional equipment or specifications not available in your area.*

**Total versatility**

- Ideal for a wide range of applications
- 6 working modes
- Wide choice of options
- Built-in versatility
- Ultimate operator control

**Highest safety standards**

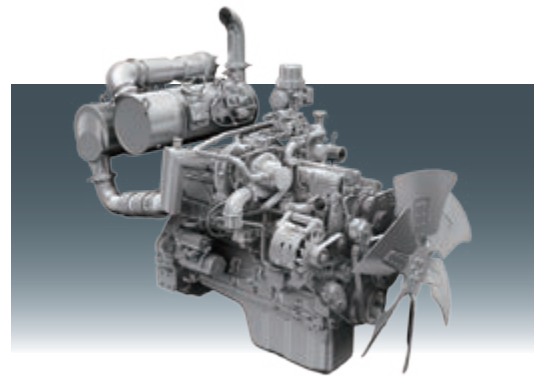
- Safe SpaceCab™  
ROPS compliant with ISO 12117-2:2008
- Improved rear view camera system  
with optional side view camera
- Optimal jobsite safety
- Safe access, easy maintenance
- Falling Object Protection System (FOPS) optional
- Hydraulic auto lock function

**Quality you can rely on**

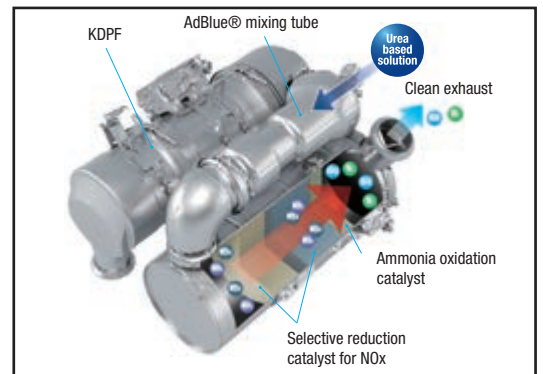
- Reliable and efficient
- Rugged design
- Komatsu-quality components
- Extensive dealer support network

**KOMTRAX™**

- Komatsu Wireless Monitoring System



*New, low consumption Komatsu SAA6D114E-6 engine*



*New heavy-duty after treatment system combines the Komatsu Diesel Particulate Filter (KDPF) and Selective Catalytic Reduction (SCR) to fully comply with EU Stage IV emissions.*



*Fully air suspended operator station ensures maximum operator comfort.*



*Improved monitoring system with rear view camera image on the default screen. Eco gauge, eco guidance, fuel consumption gauge and adjustable idle shut-down help to further reduce consumption.*



Complimentary maintenance program for customers

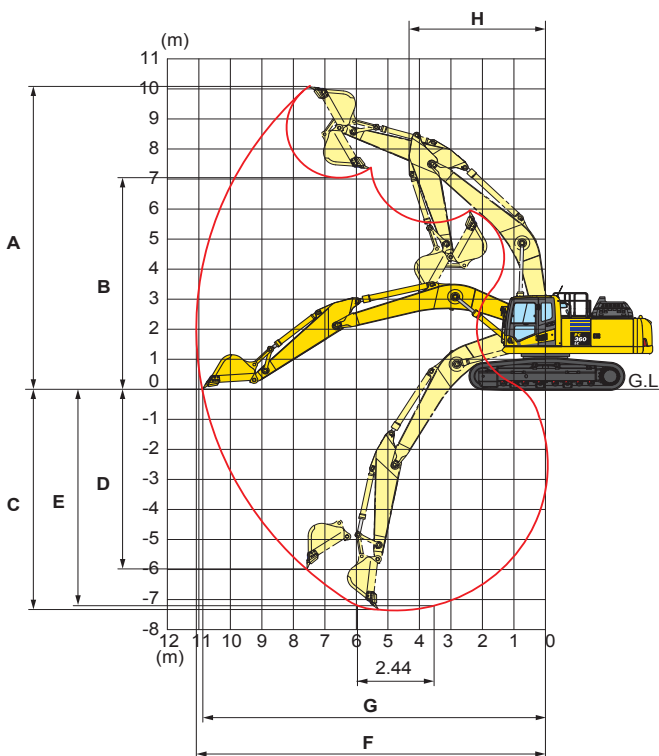
## ENGINE

Model ..... Komatsu SAA6D114E-6  
 Type ..... Common rail direct injection, water-cooled, emissionised, turbocharged, after-cooled diesel  
 Engine power  
 at rated engine speed ..... 1.950 rpm  
 ISO 14396 ..... 202 kW/271 HP  
 ISO 9249 (net engine power) ..... 192 kW/257 HP  
 No. of cylinders ..... 6  
 Bore × stroke ..... 114 × 144,5 mm  
 Displacement ..... 8,85 ltr

## HYDRAULIC SYSTEM

Type ..... HydrauMind. Closed-centre system with load sensing and pressure compensation valves  
 Additional circuits ..... 2 additional circuits with proportional control can be installed  
 Main pump ..... 2 variable displacement piston pumps supplying boom, arm, bucket, swing and travel circuits  
 Maximum pump flow ..... 2 × 267,5 ltr/min  
 Relief valve settings  
 Implement ..... 380 kg/cm<sup>2</sup>  
 Travel ..... 380 kg/cm<sup>2</sup>  
 Swing ..... 285 kg/cm<sup>2</sup>  
 Pilot circuit ..... 33 kg/cm<sup>2</sup>

## WORKING RANGE



## UNDERCARRIAGE

Construction ..... X-frame centre section with box section track frames  
 Track assembly  
 Type ..... Fully sealed  
 Shoes (each side) ..... 48  
 Tension ..... Combined spring and hydraulic unit  
 Rollers  
 Track rollers (each side) ..... 8  
 Carrier rollers (each side) ..... 2

## ENVIRONMENT

Engine emissions ..... Fully complies with EU Stage IV exhaust emission regulations  
 Noise levels  
 LwA external ..... 105 dB(A) (2000/14/EC Stage II)  
 LpA operator ear ..... 71 dB(A) (ISO 6396 dynamic test)  
 Vibration levels (EN 12096:1997)\*  
 Hand/arm ..... ≤ 2,5 m/s<sup>2</sup> (uncertainty K = 0,37 m/s<sup>2</sup>)  
 Body ..... ≤ 0,5 m/s<sup>2</sup> (uncertainty K = 0,17 m/s<sup>2</sup>)  
 \* for the purpose of risk assessment under directive 2002/44/EC, please refer to ISO/TR 25398:2006.

ARM LENGTH	2,2 m	2,6 m	3,2 m	4,0 m
A Max. digging height	9.580 mm	9.965 mm	10.210 mm	10.550 mm
B Max. dumping height	6.595 mm	6.895 mm	7.110 mm	7.490 mm
C Max. digging depth	6.355 mm	6.705 mm	7.380 mm	8.180 mm
D Max. vertical wall digging depth	5.120 mm	5.880 mm	6.480 mm	7.280 mm
E Max. digging depth of cut for 2,44 m level	6.130 mm	6.520 mm	7.180 mm	8.045 mm
F Max. digging reach	10.155 mm	10.550 mm	11.100 mm	11.900 mm
G Max. digging reach at ground level	9.950 mm	10.355 mm	10.920 mm	11.730 mm
H Min. swing radius	4.390 mm	4.400 mm	4.310 mm	4.320 mm