

FF3000 PORTABLE FLANGE FACER

FEATURES ■ SETUP & OPERATION
COMPONENTS & ACCESSORIES ■ TECHNICAL DATA

Compact, lightweight, and easy to set up.

Compact and Versatile

- Patented, low profile machine is one of the most compact on the market today.
- Lightweight, weighing only 35 lbs (15.9 kg).
- Modular design and versatile setup allows the chuck and main body to be set up separately before placement in the bore.
- Machine raised and flat flanges.
- Bi-directional feed.
- Optional beveling head connects with "Quick-Lock" system, making changeover quick & easy.

Quality Components

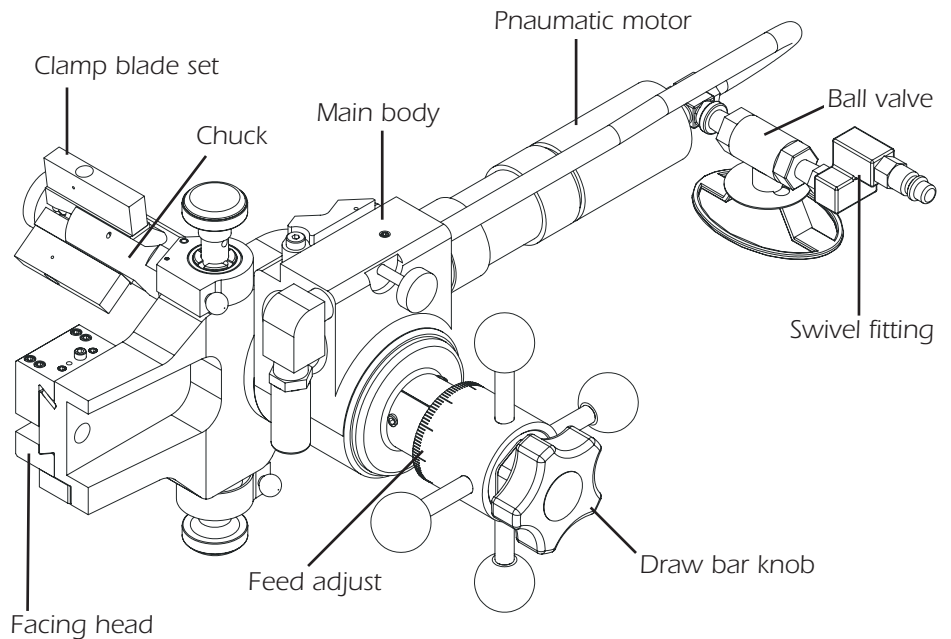
- Pneumatic motor comes complete with filter, lubricator and flow control.
- Compact, low-profile drive system engineered for superior power to weight ratio.
- Features rugged main body, heavy-duty bearings, sealed lubrication, and rigid mounting system.

Cost Effective

Cuts costs in four ways:

- Reduces downtime.
- Eliminates off-site machining costs.
- Eliminates leak sealing procedures.
- Reduces stock of replacement flanges.

Recoup the cost of a Climax Flange Facer in the first few flange facing jobs.



Specifications

	US	Metric
Flange Facing Diameter	1.5 - 12.0 inches	38.1 - 304.8 mm
Beveling Diameter (w/ optional beveling head)	2.0 - 7.0 inches	50.8 - 177.8 mm
Pipe Facing Diameter (w/ optional beveling head)	2.0 - 7.0 inches	50.8 - 177.8 mm
ID Mounting Diameter	1.5 - 6.75 inches	38.1 - 171.5 mm
Maximum radial travel of Chuck Ramps	0.23 inches	6 mm
Feed rate (reversible, variable)	0 to 0.025 inches/rev.	0 to 0.635 mm/rev.
Power, Pneumatic	0.79 Hp	0.59 kW
Power Requirement	36 cfm, 90 psi	1.02 m ³ /m, 629 kPa
Operating Weight	35 lbs	15.9 kg
Shipping Weight (Machine w/ Facing Head Only)	102 lbs	46.3 kg
Shipping Weight (Machine w/ Beveling Head Only)	95 lbs	43.1 kg
Shipping Weight (Machine w/ Facing & Beveling heads)	109 lbs	49.4 kg
Shipping Dimensions (2 containers)	32 x 21 x 11 inches	812.8 x 533.4 x 279.4 mm

Tool Configurations

Flange Facing Package includes:

- Basic machine with 0.79Hp (0.59kW) pneumatic motor with air conditioning unit
- Three jaw chuck and jaws
- Facing head and 2 facing bits
- Tool kit with instruction manual
- Unit comes packed in a durable molded container

To order this unit, refer to
FF3000.1.00.000.11.10

Pipe Beveling Package includes:

- Basic machine with 0.79Hp (0.59kW) pneumatic motor with air conditioning unit
- Three jaw chuck and jaws
- Beveling head and 3 beveling bits
- Tool kit with instruction manual
- Unit comes packed in a durable molded container

To order this unit, refer to
FF3000.1.00.000.11.01

Facing & Beveling Package includes:

- Basic machine with 0.79Hp (0.59kW) pneumatic motor with air conditioning unit
- Three jaw chuck and jaws
- Facing head
- Beveling head
- Two facing bits
- Three beveling bits
- Tool kit with instruction manual
- Unit comes packed in a durable molded container

To order this unit, refer to
FF3000.1.00.000.11.11

Optional Facing/Beveling Bits:

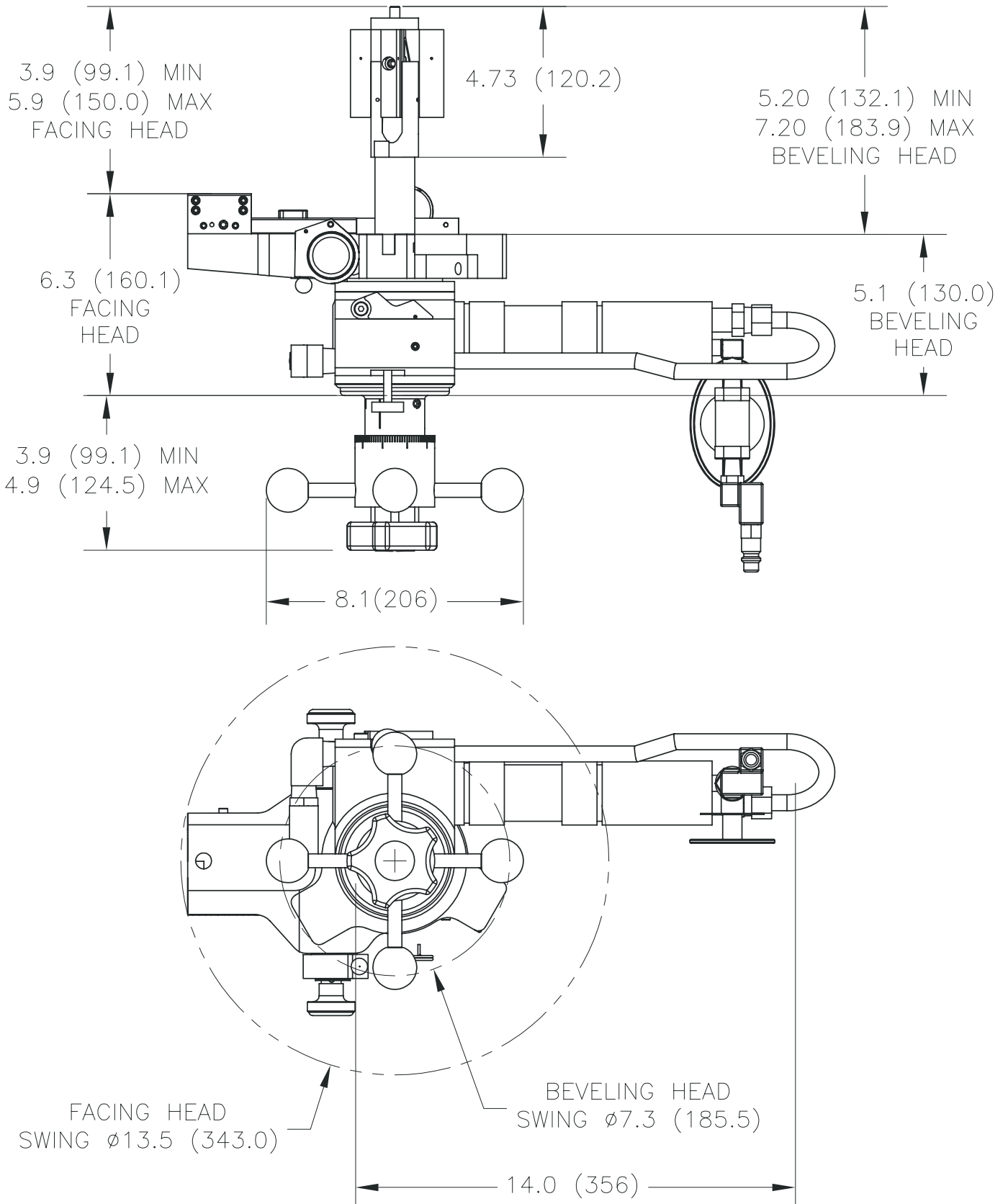
- 33141 facing bit
- 33136 beveling bit 37.5 degrees
- 31867 roughing tool bit
- 31858 finishing tool bit
- 33315 5 degree chamfer tool bit

Facing and Beveling Heads:

- 34980 beveling head
- 35222 facing head

FF3000 Operational Dimensions

Dimensions in inch (mm)



Setup and Operation

Setup of the FF3000 is quick and easy. The modular design and versatile setup options allows the chuck and main body to be set up separately. An experienced operator can set up the machine in 10 minutes or less.

- 1** Choose from facing or beveling heads. Place tool bit in tool slot and tighten set screw.



- 2** Align the 3 pin "Quick-Lock" system and tap with plastic mallet to seat.



- 3** Select jaw set according to the ID diameter that the machine will chuck into.



- 4** Place the machine in the bore. Hold to good start height, and tighten hand nut to snug. Push down on hand nut. While holding nut down, turn rod handle to tighten chuck.



- 5** Set tool to desired cutting depth, and begin machining.



Training at the Portable Machining Training Institute

Climax has been teaching the fundamentals and fine points of portable machine tool operation for practically as long as we've been inventing and building the tools.

At the Portable Machining Training Institute situated in our corporate headquarters near Portland, Oregon, we provide training for machine tool operators on portable machine tool safety, and machine setup and operation. Trainees also receive technical tips and tools to improve operational efficiencies. With the vast majority of every program devoted to hands-on activities and skill development. The Climax instructional team includes specialists in shipbuilding, power generation, civil engineering, bridge re-building, and other industries.



Whether it's a regularly scheduled course at the Portable Machining Training Institute, or a custom curriculum conducted at your facility, your machinists will benefit from courses developed by some of the most respected authorities in the business.



Call us today to register for a regularly scheduled class, or talk to us about how we can customize a training program for your specialized application.

Climax Portable Machine Tools Worldwide Manufacturing, Sales & Rental Facilities



Call Climax for:

Rentals

With six locations in the USA, two in Canada, one in Europe, and one in Asia, you are never far away from a Climax portable machine tool.

Special Projects

Climax has been solving complicated on-site machining problems for our customers since 1964.

On-site Training

Need some refresher courses in setting up and operating your Climax machine tool?

Call us. We'll bring the solution to you.

FF3-.5M1105

Corporate Headquarters

Climax Portable Machine Tools, Inc.
2712 E. Second Street, P.O. Box 1210
Newberg, Oregon 97132 USA
Worldwide Telephone: 503.538.2185
USA Toll-Free: 800.333.8311
Fax: 503.538.7600
Email: info@cpmt.com

European Headquarters

Climax GmbH
Willi - Bleicher - Strasse 11
52353 Düren, Germany
Telephone: (+49) (0) 2421.9177.0
Fax: (+49) (0) 2421.9177.29
Email: info.de@cpmt.com

Houston Sales Office

Climax Portable Machine Tools, Inc.
16823 Highway 35
Pearland, TX 77581 USA
Telephone: 281.469.0429



www.cpmt.com