

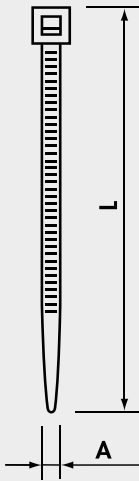
# CABLE TIES

G series, PA6.6 Polyamide

G



Material: PA6.6 Polyamide  
 Self-extinguishing V2 (UL 94)  
 Humidity absorption:  
 2,5% (at 50% relative humidity)  
 Operating temperature:  
 From -40°C to +85°C (continuous)  
 From -40°C to +120°C (short periods)  
 Resistant to:  
 oils, greases, oil products, chlorinated solvents.  
 Colour: Natural or Black (Ral 2005)



Black ties have higher UV resistance due to increased carbon black loading

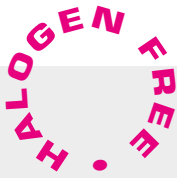
Natural ties offer rapid installation due to the low friction coefficient of the material

## Cable Ties in PA6.6

Type	L (mm)	A (mm)	Max. Bundle Ø (mm)	Min. Loop Tensile Strength (kg)	Quantity	
G80X2.4	80	2,4	15	8	100	
G80X2.4N					1000	
G80X2.4/M			16		100	
G80X2.4N/M					1000	
G90X2.4	90	2,4	16		100	
G90X2.4N						1000
G100X2.5			100		22	
G100X2.5N						30
G100X2.5/M	140	2,5		33	1000	
G100X2.5N/M						40
G120X2.5			120	2,5	33	
G120X2.5N						40
G140X2.5	140	2,5			33	
G140X2.5N						40
G140X2.5/M			160	2,5	40	
G140X2.5N/M						53
G160X2.5	160	2,5			40	
G160X2.5N						53
G160X2.5/M			200	2,8	53	
G160X2.5N/M						65
G200X2.5	200	2,8			53	
G200X2.5N						65
G200X2.5/M			120	3,6	65	
G200X2.5N/M						76
G250X2.8	250	3,6			65	
G250X2.8N						76
G300X2.8			300	3,6	76	
G300X2.8N						102
G120X3.6	120	3,6			30	
G120X3.6N						44
G140X3.6			140	3,6	33	
G140X3.6N						53
G140X3.6/M	150	3,6			35	
G140X3.6N/M						44
G150X3.6			150	3,6	35	
G150X3.6N						53
G180X3.6	180	3,6			44	
G180X3.6N						65
G200X3.6			200	3,6	53	
G200X3.6N						76
G200X3.6/M	250	3,6			65	
G200X3.6N/M						76
G250X3.6			250	3,6	65	
G250X3.6N						102
G300X3.6	300	3,6			76	
G300X3.6N						102
G300X3.6/M			370	4,8	102	
G300X3.6N/M						102
G370X3.6	370	4,8			102	
G370X3.6N						105
G120X4.8			120	4,8	24	
G120X4.8N						102
G160X4.8	160	4,8			38	
G160X4.8N						102
G190X4.8			190	4,8	46	
G190X4.8N						102
G190X4.8/M	200	4,8			46	
G190X4.8N/M						50
G200X4.8			200	4,8	50	
G200X4.8N						60
G200X4.8/M	250	4,8			60	
G200X4.8N/M						60
G250X4.8			250	4,8	60	
G250X4.8N						70
G280X4.8	280	4,8			70	
G280X4.8N						76
G300X4.8			300	4,8	76	
G300X4.8N						102
G370X4.8	370	4,8			102	
G370X4.8N						105
G390X4.8			390	4,8	105	
G390X4.8N						110
G430X4.8	430	4,8			110	
G430X4.8N						

Minimum order: 1.000 pcs

Minimum order: 100 pcs



## CABLE TIES

G series, PA6.6 Polyamide

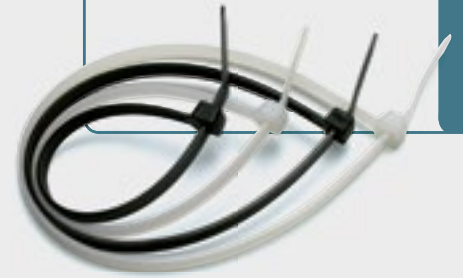
G

### Cable Ties in PA6.6

Type	L (mm)	A (mm)	Max. Bundle Ø (mm)	Min. Loop Tensile Strength (kg)	Quantity								
G450X4.8	450	4,8	116	22	100								
G450X4.8N													
G530X4.8													
G530X4.8N	530	4,8	140	100									
G150X7.6													
G150X7.6N													
G200X7.6	200	7,6	33			100							
G200X7.6N													
G250X7.6													
G250X7.6N	250	7,6	50				100						
G300X7.6													
G300X7.6N													
G370X7.6	300	7,6	65					100					
G370X7.6N													
G430X7.6													
G430X7.6N	430	7,6	76						100				
G530X7.6													
G530X7.6N													
G430X9.0	430	9,0	102							100			
G430X9.0N													
G530X9.0													
G530X9.0N	530	9,0	125								100		
G710X9.0													
G710X9.0N													
G780X9.0	710	9,0	140									100	
G780X9.0N													
G830X9.0													
G830X9.0N	780	9,0	190										100
G920X9.0													
G920X9.0N													
G1020X9.0	920	9,0	228		100								
G1020X9.0N													
G1220X9.0													
G1220X9.0N	1020	12,6	239	100									
G230X12.6													
G230X12.6N													
G380X12.6	1220	12,6	263			100							
G380X12.6N													
G480X12.6													
G480X12.6N	480	12,6	295				100						
G580X12.6													
G580X12.6N													
G730X12.6	580	12,6	365					100					
G730X12.6N													
G880X12.6													
G880X12.6N	730	12,6	50						100				
G1030X12.6													
G1030X12.6N													
G1030X12.6N	880	12,6	106							100			
G730X12.6													
G880X12.6													
G880X12.6N	880	12,6	120								100		
G1030X12.6													
G1030X12.6N													
G1030X12.6N	1030	12,6	152									100	
G730X12.6													
G880X12.6													
G880X12.6N	730	12,6	204										100
G1030X12.6													
G1030X12.6N													
G1030X12.6N	880	12,6	248		100								
G730X12.6													
G880X12.6													
G1030X12.6	1030	12,6	295	100									
G1030X12.6N													
G1030X12.6N													

Minimum order: 100 pcs

Note: In Type, N = Black



Angled tongue to facilitate easy introduction into the buckle



Rounded corners for increased safety



## CABLE TIES

G series, PA6.6 Polyamide, VO (UL94)

G VO

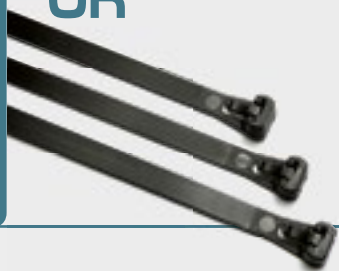
### Cable Ties in PA6.6 - VO (UL94)

Type	L (mm)	A (mm)	Max. Bundle Ø (mm)	Min. Loop Tensile Strength (kg)	Quantity	Minimum Order Qty	
G90X2.4 VO	90	2,4	16	8	100	1000	
G100X2.5/M VO	100	2,5	22		18		1000
G140X2.5/M VO	140		33				1000
G200X2.5/M VO	200	53	1000				
G150X3.6 VO	150	3,6	35	22	100		100
G200X4.8/M VO	200	4,8	50		80		
G370X4.8 VO	370		102			100	
G430X4.8 VO	430	110	100				
G710X9.0 VO	710	9,0	190	100			

Same features as G series except: self-extinguishing VO (UL 94)

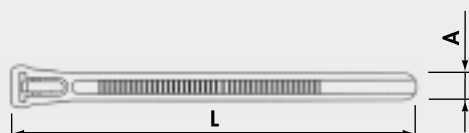
## CABLE TIES

# GR



Same features as G series.  
Easy installation without tools.  
Released by pressure on the tongue.  
Suitable for temporary locking.

GR series, PA6.6 Polyamide



HALOGEN FREE

### Releasable cable ties in PA6.6

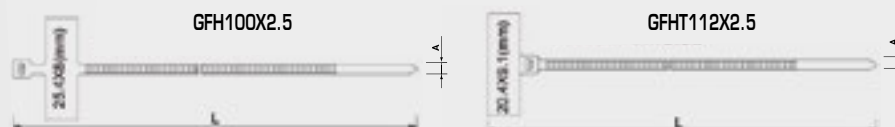
Type	L (mm)	A (mm)	Max. Bundle Ø (mm)	Min. Loop Tensile Strength (kg)	Quantity
GR100X7.6N	100	7,6	20	22,2	100
GR120X7.6N	120		30		
GR150X7.6N	150		35		
GR200X7.6N	200		50		
GR250X7.6N	250		66		
GR300X7.6N	300		80		
GR370X7.6N	370		102		

# GFH



Same features as G series.  
Quick and easy identification of bundled conductors.  
Write on panel with Felt tip pen.

GFH series, PA6.6 Polyamide



HALOGEN FREE

### Markable cable ties in PA6.6

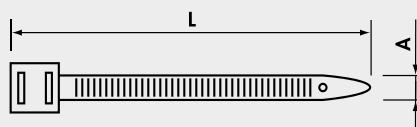
Type	L (mm)	A (mm)	Max. Bundle Ø (mm)	Min. Loop Tensile Strength (kg)	Quantity
GFH100X2.5	100	2,5	18	8,1	100
GFHT112X2.5	112				

# 1600



Material: Elastomerized Polymer on Polyamide base  
Self-extinguishing HB (UL94)  
Halogen free  
Operating temperature:  
From -45°C to + 85°C (continuous)  
From -45°C to + 120°C (short periods)  
Resistant to:  
UV, salt atmosphere, oils, greases, oil products  
Colour: Black

1600 series,  
Elastomerized Polymer on Polyamide base



HALOGEN FREE

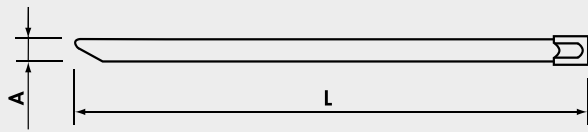
### Cable Ties in PA12 Polyamide

Type	Head Type	L (mm)	A (mm)	Min. Bundle Ø (mm)	Max. Bundle Ø (mm)	Min. Loop Tensile Strength (kg)	Quantity
1618.90	single	180	9	15	40	40	100
1626.90	double	260	9	30	60	55	100
1636.90	double	360	9	30	93	55	100
1651.90	double	510	9	70	140	55	100
1676.90	double	760	9	70	220	55	100

# CABLE TIES

in Stainless Steel AISI 304

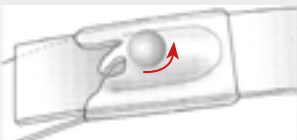
GX



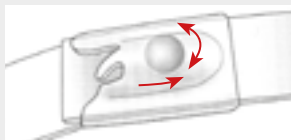
## Cable Ties in Stainless Steel

Type	L (mm)	A (mm)	Max. Bundle Ø (mm)	Min. Loop Tensile Strength (kg)	Quantity
GX200X4.5	200	4,5	50	46	100
GX300X4.5	300		76		
GX370X4.5	370		102		
GX520X4.5	520	7,9	156	114	
GX370X7.9	370		102		
GX680X7.9	680		207		
GX1020X7.9	1020		312		

Material: Stainless Steel AISI 304  
 Unique ball locking mechanism that allows simple and rapid installation and secure locking.  
 Operating temperature: From -80°C to +500°C  
 High tensile strength.  
 Non-flammability.  
 High resistance to acetic acid, alkalies, sulphuric acid, corrosion, etc.  
 In general very resistant to most hostile environments.



Insert the tongue into the buckle. The internal locking ball rolls freely as the tie is tightened.



Once the correct tension is reached, use the specific tool to trim the tongue. The ball then wedges into the buckle locking it tightly against both the top and bottom of the tie.



AB  
CC  
SS

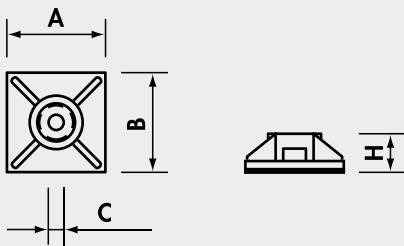


## ACCESSORIES

### PA6.6 Polyamide

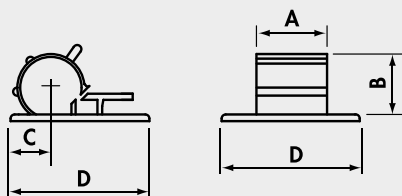
Material: PA6.6 Polyamide  
Self-extinguishing V2 (UL 94)  
Humidity absorption:  
2,5% (at 50% relative humidity)  
Operating temperature:  
From -40°C to +85°C (continuous)  
From -40°C to +120°C (short periods)

Resistant to:  
oils, bases, greases, oil products,  
chlorinated solvents.  
Colour: Natural



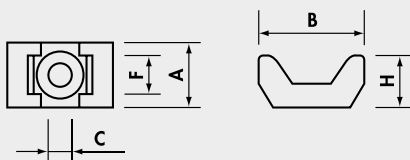
#### Self adhesive cable tie bases in PA6.6

Type	Max Tie (mm)	A (mm)	B (mm)	C (mm)	H (mm)	Fixing screw hole Ø (mm)	Quantity
AB 13	2,8	13,0	13,0	3,2	3,2	-	100
AB 19	3,6	19,0	19,0	4,0	4,4	3,1	100
AB 28	4,8	28,0	28,0	5,3	5,7	5,5	100



#### Self adhesive cable clips in PA6.6

Type	Cable Ø (mm)	A (mm)	B (mm)	C (mm)	D (mm)	Quantity
CC 8.9	8-9	9,0	12,0	8,0	21,5	100
CC 9.12	9-12	12,0	15,0	8,2	21,5	100



#### Cable tie saddle clamps in PA6.6

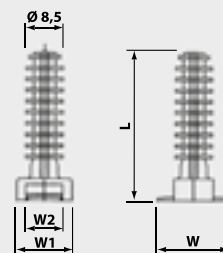
Type	Max Tie (mm)	A (mm)	B (mm)	C (mm)	F (mm)	H (mm)	Quantity
SS 4.8-3.7	4,8	9,5	15	3,7	5,0	7,2	100
SS 4.8-4.5	4,8	9,5	15	4,5	5,0	7,2	100
SS 9.4.5	9	16,0	22	4,5	9,2	9,7	100
SS 9.5	9	16,0	22	5,0	9,2	9,7	100
SS 9.6.4	9	16,0	22	6,4	9,2	9,7	100

GH8



## ACCESSORIES

### PA6.6 Polyamide



Same features as G series.  
Push into Ø 8 mm hole.  
Cable tie inserted through slot in head.

#### Stud fixing for cable ties in PA6.6

Type	W (mm)	W1 (mm)	W2 (mm)	L (mm)	Fixing hole Ø (mm)	Quantity
GH8	20	15	10	40,5	8	100