

# Impact Wrenches



# Impact Wrenches Features

## CLUTCHES SELECTION

Chicago Pneumatic is known worldwide for its variety of durable clutch designs. These clutch options could be divided in two categories:

### Medium Duty:

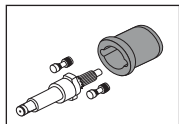
Pin Clutch and Rocking Dog

- High Power / Weight ratio
- Pin clutch: Very good for hard joint applications
- Rocking Dog: Excellent for very soft joint
- Excellent durability for Medium Duty jobs
- Fast rundown

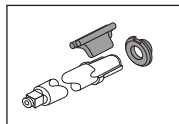
### Heavy and Super Duties:

Single & Double Dog, 2-Jaw & 3-Jaw, and Twin Lobe

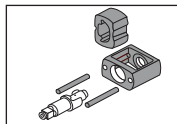
- Rundown starts slowly but increases constantly
- Performance is excellent for all type of joints
- Twin Lobe clutch especially designed for very soft joints
- 2-Jaw & 3-Jaw: Extraordinary durability for Heavy and Super Duty applications



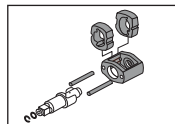
Pin clutch



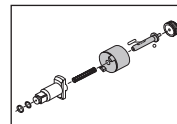
Rocking Dog clutch



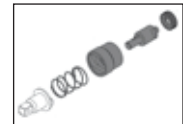
Single Dog clutch



Double Dog clutch



2-Jaw & 3-Jaw clutch



Twin Lobe clutch

## BOLT SELECTION CHART

The table below details the suggested maximum torque for varying bolt sizes and grades. These torque figures are for guidance only.

Always confirm values with the bolt supplier/ manufacturer.

in.	SAE		ASTM-UNC GRADE 8/A490	mm	METRIC		
	GRADE 1 & 2	GRADE 5			ISO 8.8	ISO 10.9	ISO 12.9
1/4	3	8	11	M6	10.5	15	17
5/16	6	16	22	M8	25	36	43
3/8	11	28	38	M10	51	71	86
7/16	18	46	61	M12	87	122	146
1/2	28	70	94	M14	138	195	234
9/16	43	110	135	M16	213	299	359
5/8	55	140	188	M18	293	413	495
3/4	57	250	336	M20	416	585	702
7/8	155	405	541	M22	563	792	950
1	230	600	812	M24	718	1011	1213
1-1/8	340	770	1151	M27	1060	1491	1789
1-1/4	180	1080	1626	M30	1440	2025	2430
1-3/8	660	1470	2130	M36	1956	2751	3301
1-1/2	860	1950	2830	M42	2517	3540	4248
				M45	4510	6340	7610
				M48	5450	7660	9190

## HANDLE TYPE



Pistol (P)



D Handle  
Inside  
Trigger (D I T)



D Handle  
Outside  
Trigger (D O T)

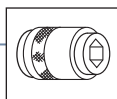
## JOINT TYPE

DRIVE	MODEL	DUTY	VERY SOFT	SOFT	MEDIUM	HARD	VERY HARD
3/8"	CP6031	***		X	X	X	
	CP6300	**		X	X	X	
1/2"	CP6041	***		X	X	X	
	CP6031	***		X	X	X	
	CP6500	**		X	X	X	
	CP6540	**	X	X	X	X	
3/4"	CP9541	*		X	X	X	X
	CP6060	***		X	X	X	
	CP9561	*		X	X	X	X
1"	CP0611	***		X	X	X	
	CP6110	***	X	X	X	X	
	CP0610	**		X	X	X	
	CP6910	*	X	X	X	X	
	CP6920	*	X	X	X	X	
1-1/2"	CP6120	***		X	X	X	
	CP0614	**		X	X	X	

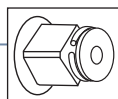
Super Duty: \*\*\* / Heavy Duty: \*\* / Medium Duty: \*

## SOCKET RETENTION

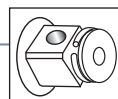
A wide selection of retainers provides versatility for every type of application. All with power, speed and comfort.



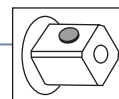
Quick Change  
for hexagonal and  
sockets bits



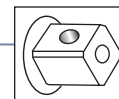
Friction Ring  
for rapid sockets  
change



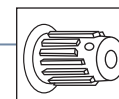
Dual  
(Hole + Friction)  
for versatility



Pin Retainer  
for dedicated  
applications



Hole  
for pin O-ring type  
retention



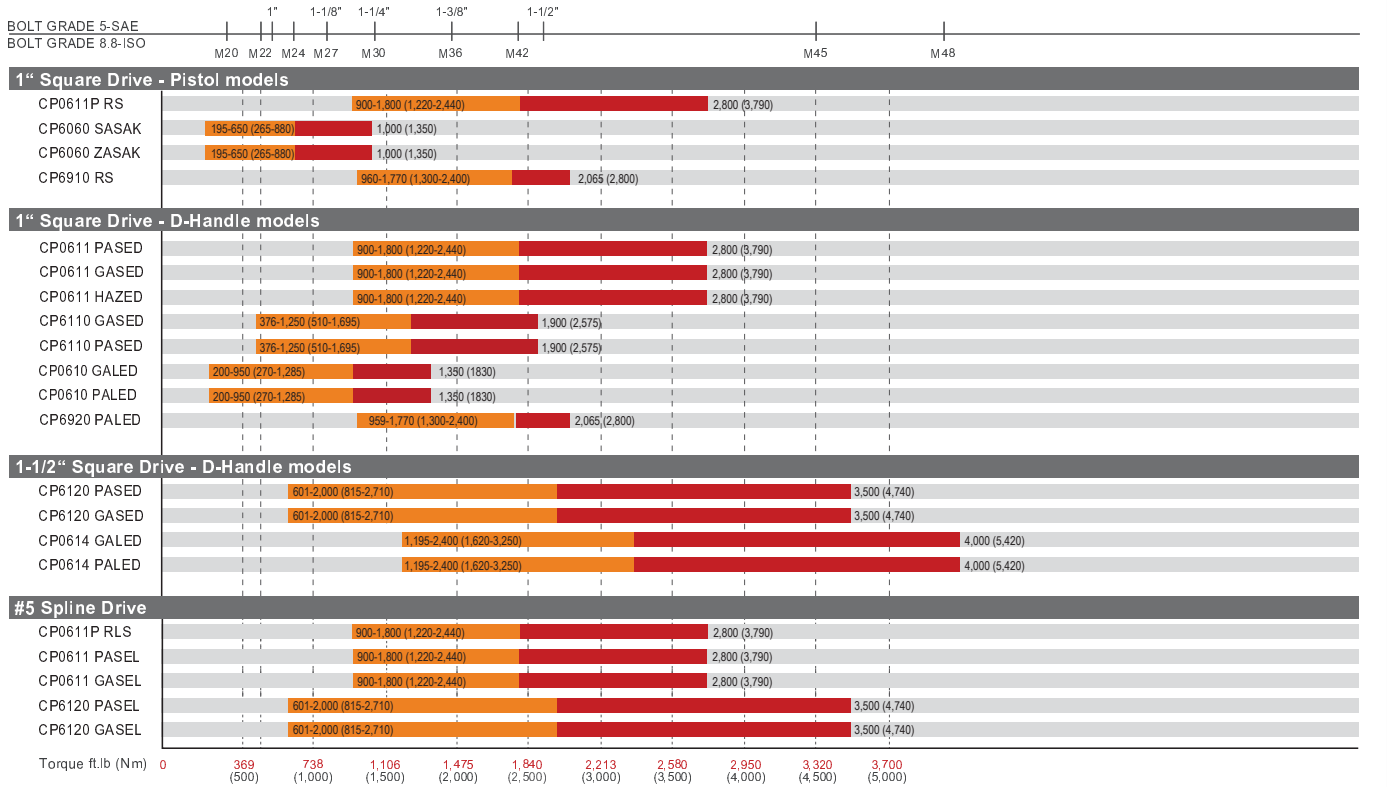
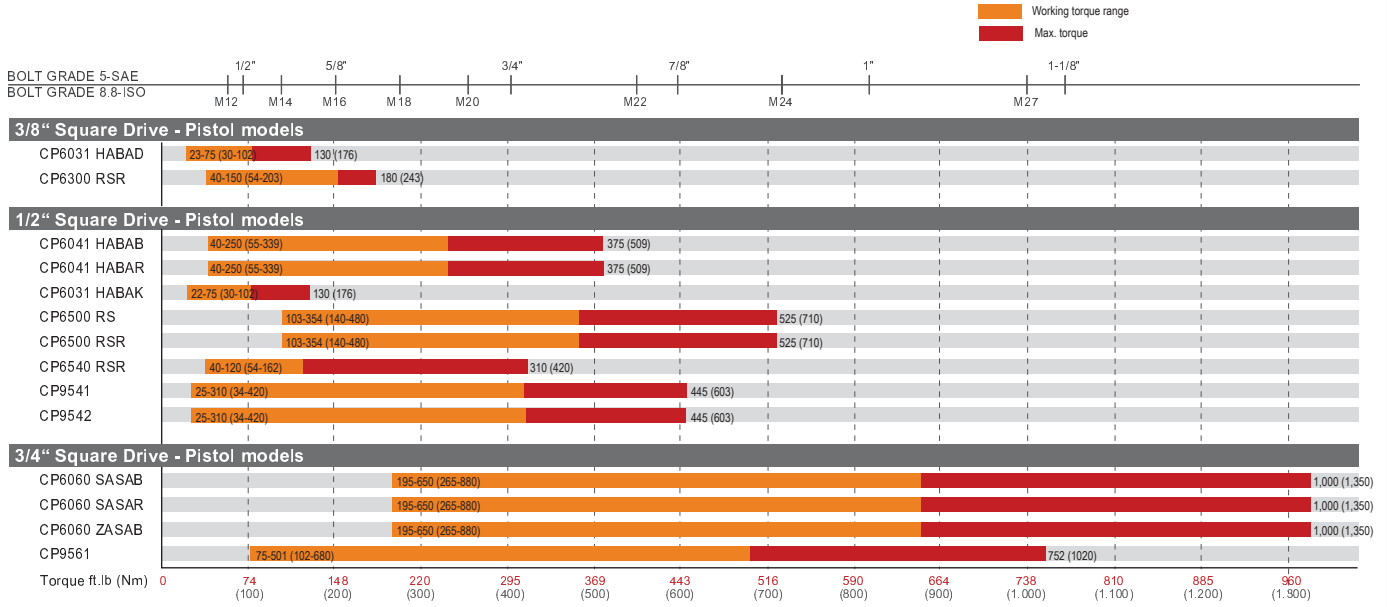
Integral Spline #5  
with integral push  
button retainer

VERSATILITY



SAFETY

# Impact Wrench Torque Ranges

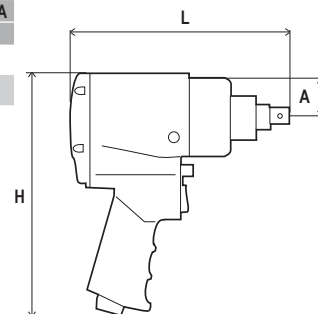


# Dimensions and Accessories



## DIMENSIONS

MODEL	DIMENSIONS					
	L		H		SIDE TO CENTER - A	
	in.	mm	in.	mm	in.	mm
CP6031 HABAD	5.6	143	6.6	168	0.75	19
CP6300 RSR	6.0	152	7.7	197	1.26	32



## ACCESSORIES

### SOCKETS

INDIVIDUAL SOCKETS (SAE & METRIC)



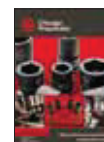
MODEL	DESCRIPTION	PART NO.
<b>SAE* (in.)</b>		
S314	3/8" DR STD Impact socket 7/8"	894 016 3782
S306D	3/8" DR DEEP Impact socket 3/8"	894 016 3802
S307D	3/8" DR DEEP Impact socket 7/16"	894 016 3803
<b>METRIC (mm)</b>		
S308M	3/8" DR STD Impact socket 8mm	894 016 3786
S310M	3/8" DR STD Impact socket 10mm	894 016 3788
S312M	3/8" DR STD Impact socket 12mm	894 016 3790
S313M	3/8" DR STD Impact socket 13mm	894 016 3791
S313MD	3/8" DR DEEP Impact socket 13mm	894 016 3819

SETS (SAE & METRIC)



MODEL	DESCRIPTION	PART NO.
<b>SAE* (in.)</b>		
SS3012	3/8" DR (12pcs) Impact Set	894 016 4452
SS3012D	3/8" DR (12 pcs) Deep Impact Set	894 016 4453
<b>METRIC (mm)</b>		
SS3113	3/8" DR (13pcs) Impact Set	894 016 4446
SS3113D	3/8" DR (13pcs) Deep Impact Set	894 016 4447

More socket sets available in the CP Impact Sockets catalog  
 (\*) Available in North America only



### GLOVES



DESCRIPTION	PART NO.
Impact Gloves: Large	894 015 8618
Impact Gloves: Extra Large	894 015 8619

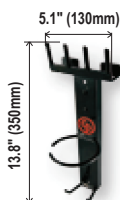
### LUBRICATION



OIL PROTECTO-LUBE FOR MOTOR	PART NO.
4 oz. (0.12 l) - Air Tool Oil	CA149661
20.8 oz (0.591 l) - Air Tool Oil	CA000046
1 Gal (3.8l) - Airoilene oil	P089507

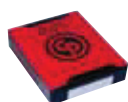
GREASE PNEU-LUBE FOR CLUTCH	PART NO.
Pneu-Lube 100GM Tube	894 015 8455
Pneu-Lube Cartridge	894 015 8456
Pneu-Lube 7# Can	894 015 8457
Grease Gun + 2 Nozzles	C098689

### MAGNETIC TOOL HOLDER



MODEL	PART NO.
CP9841	894 016 6664

### TUNE-UP KITS & REPAIR KITS



MODEL	TUNE-UP KIT	REPAIR KIT
CP6031 HABAD	C137566	-
CP6300 RSR	C157304	C157305

For Air Line accessory products, Balancers please see pages 78 to 93

# Impact Wrench 3/8"

23 to 150 ft.lb (30 to 203 Nm)

## CP6300 RSR

High power to weight ratio



Clutch: Single dog

## FEATURES and BENEFITS

- Reliable and powerful 2-Jaw Oil-Bath clutch
- Durable Steel Clutch Housing for Super Duty and harsh applications
- Pistol Shape with a 3-piece construction engineered for easy maintenance
- Lightweight at only 3.3 lbs (1.5kg)



CP6031 HABAD



Clutch: 2-Jaw - Oil-Bath

CP6031 HABAD

### JOINT TYPE

DRIVE	MODEL	DUTY	VERY SOFT	SOFT	MEDIUM	HARD
3/8"	CP6031	***		x	x	x
	CP6300	**		x	x	x

Torque ranges should be used as a guide only. Final torque will depend on the joint, operating pressure and drive accessories.

MODEL	PART NUMBER	BOLT SIZE GRADE		DRIVE	CLUTCH TYPE	HANDLE STYLE	BLOWS PER MIN.	FREE SPEED	WORKING TORQUE (FW)*		MAX. TORQUE (REV)**		NET WEIGHT		AIR CONS. ***		AIR INLET
		SAE 5 in.	ISO 8.8 mm						in.	ft.lb	Nm	ft.lb	Nm	lb	kg	cfm	
CP6031 HABAD	T021887	7/16	10-12	3/8	2-Jaw - Oil-Bath	P	2,200	10,000	23-75	30-102	130	176	3.3	1.5	25	12.0	1/4"
CP6300 RSR	T025285	9/16	14-16	3/8	Single-Dog	P	1,800	6,800	40-150	54-203	180	243	3.5	1.6	14	6.6	1/4"

All models: Hose int. 3/8" (10mm) @90 PSI (@6.3 Bar).

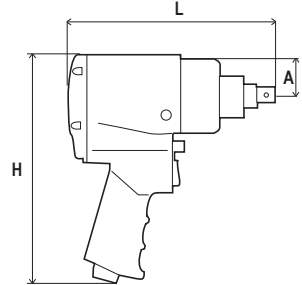
\*Values @90 PSI (@6.3 bar) - 4 sec. \*\*Values @90 PSI (@6.3 bar) - 10 sec. \*\*\* Values at free speed.

# Dimensions and Accessories



## DIMENSIONS

MODEL	DIMENSIONS					
	L		H		SIDE TO CENTER - A	
	in.	mm	in.	mm	in.	mm
CP6041 ...	6.8	173	8.0	204	1.10	28
CP6031 HABAK	5.6	143	6.6	168	0.75	19
CP6500 RS	7.0	178	8.1	205	1.26	32
CP6500 RSR	7.4	188	8.1	205	1.26	32
CP6540 ...	7.4	188	8.1	205	1.26	32
CP9541	6.6	168	7.2	184	1.18	30
CP9542	6.6	168	7.2	184	1.18	30



## ACCESSORIES

### 1/2" SQUARE DRIVE

MODEL	DESCRIPTION	PART NO.
CP6500	1/2" square drive with 2" (50mm) extension friction ring retainer	CA148629

### SOCKETS

#### INDIVIDUAL SOCKETS (SAE & METRIC)

MODEL	DESCRIPTION	PART NO.
<b>SAE* (in.)</b>		
S412D	1/2" DR Deep Impact socket 3/4"	894 016 3983
S413D	1/2" DR Deep Impact socket 13/16"	894 016 3984
S415D	1/2" DR Deep Impact socket 15/16"	894 016 3986
S420D	1/2" DR Deep Impact socket 1-1/4"	894 016 3991
<b>METRIC (mm)</b>		
S417MD	1/2" DR Deep Impact socket 17 mm	894 016 4007
S419MD	1/2" DR Deep Impact socket 19 mm	894 016 4009
S421MD	1/2" DR Deep Impact socket 21mm	894 016 4010

#### SETS (SAE & METRIC)

MODEL	DESCRIPTION	PART NO.
<b>SAE* (in.)</b>		
SS4013	1/2" DR 13pcs Impact Set	894 016 4465
SS4013D	1/2" DR 13pcs Impact Set	894 016 4466
<b>METRIC (mm)</b>		
SS4114	1/2" DR 14pcs Impact Set	894 016 4458
SS4114D	1/2" DR 14pcs Impact Set	894 016 4459

More socket sets available in the CP Impact Sockets catalog  
 (\*) Available in North America only



### GLOVES

DESCRIPTION	PART NO.
Impact Gloves: Large	894 015 8618
Impact Gloves: Extra Large	894 015 8619

### LUBRICATION

OIL PROTECTO-LUBE FOR MOTOR	PART NO.
4oz. (0.12 l) - Air Tool Oil	CA149661
20.8oz (0.591 l) - Air Tool Oil	CA000046
1 Gal (3.8l) - Airoilene oil	P089507

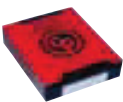
### MAGNETIC TOOL HOLDER

MODEL	PART NO.
CP9841	894 016 6664



### TUNE-UP KITS & REPAIR KITS

MODEL	TUNE-UP KIT	REPAIR KIT
CP6041	C144450	C144448
CP6031 HABAK	C137566	894 015 8639
CP6500 RS	894 015 8638	894 015 8639
CP6500 RSR	894 015 8638	894 015 8640
CP6540 RSR	894 015 8638	894 015 8642
CP9541	C137164	C137478
CP9542	C137164	C137165



For Air Line accessory products, Balancers please see pages 78 to 93

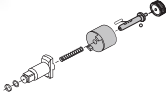
# Impact Wrench 1/2"

## CP6031 HABAK

Steel clutch housing for abusive and harsh environments



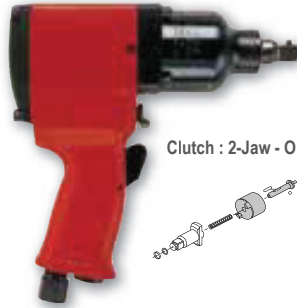
Clutch : 2-Jaw - Oil-Bath



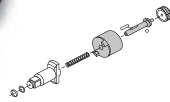
## CP6041 HABAB

## CP6041 HABAR

Hard hitting impact blows



Clutch : 2-Jaw - Oil-Bath



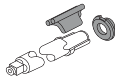
## CP6540 RSR

## CP6540 RSS

Excellent for very soft joint



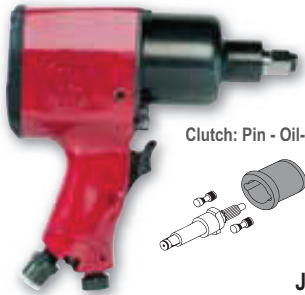
Clutch: Rocking Dog



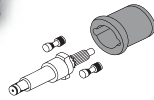
## CP9541

## CP9542

Fast rundown



Clutch: Pin - Oil-Bath



23 to 354 ft.lb (30 to 480 Nm)

## FEATURES and BENEFITS

- High Torque/Weight ratio
- Double Dog clutch for smooth operation
- Durable Steel Clutch Housing for Heavy Duty and harsh applications
- Pistol Shape with a 3-piece construction engineered for easy maintenance
- Lightweight, only 5.8lbs (2.65kg)
- Ergonomic: Soft Grip for comfort and balanced for reduced strain
- Single handed fwd/rev operation



Clutch: Double Dog - Oil Bath

Available with Pin:  
CP6500 RS

**CP6500 RSR**

### JOINT TYPE

DRIVE	MODEL	DUTY	VERY SOFT	SOFT	MEDIUM	HARD	VERY HARD
1/2"	CP6041	***		x	x	x	
	CP6031	***		x	x	x	
	CP6500	**		x	x	x	
	CP6540	**	x	x	x		
	CP9541	*			x	x	x

Torque ranges should be used as a guide only. Final torque will depend on the joint, operating pressure and drive accessories.

MODEL	PART NUMBER	BOLT SIZE GRADE		DRIVE	CLUTCH TYPE	HANDLE STYLE	BLOWS PER MIN.	FREE SPEED.	WORKING TORQUE (FW)*		MAX. TORQUE (REV)**		NET WEIGHT		AIR CONS. ***		AIR INLET
		SAE 5 in.	ISO 8.8 mm						in.	ft.lb	Nm	ft.lb	Nm	lb	kg	cfm	l/s
CP6031 HABAK	T021884	7/16	8-10	1/2	2-Jaw - Oil-Bath	P	2,200	10,000	23-75	30-102	130	176	3.3	1.50	25	12.0	1/4"
CP6041 HABAR	T022331	1/2 - 5/8	14-16	1/2	2-Jaw - Oil-Bath	P	1,700	6,500	40-250	55-339	375	509	6.2	2.80	40	18.9	1/4"
CP6041 HABAB	T021888	1/2 - 5/8	14-16	1/2	2-Jaw - Oil-Bath	P	1,700	6,500	40-250	55-339	375	509	6.2	2.80	40	18.9	1/4"
CP6500 RSR	T025216	5/8 - 3/4	18-20	1/2	Double Dog - Oil-Bath	P	1,320	6,400	103-354	140-480	525	710	5.8	2.65	25	11.8	1/4"
CP6500 RS	T025214	5/8 - 3/4	18-20	1/2	Double Dog - Oil-Bath	P	1,320	6,400	103-354	140-480	525	710	5.8	2.65	25	11.8	1/4"
CP6540 RSR	T025313	1/2 - 9/16	12-14	1/2	Rocking-Dog - Oil-Bath	P	1,320	6,400	40-120	54-162	310	420	6.2	2.80	22	10.4	1/4"
CP6540 RSS	T025314	1/2 - 9/16	12-14	7/16 Hex.	Rocking-Dog - Oil-Bath	P	1,320	6,400	40-120	54-162	310	420	6.2	2.80	22	10.4	1/4"
CP9541	615 190 9541	7/16 - 3/4	16-18	1/2	Pin - Oil-Bath	P	1,100	8,900	25-310	34-420	445	603	5.5	2.50	14	6.6	1/4"
CP9542	615 190 9542	7/16 - 3/4	16-18	1/2	Pin - Oil-Bath	P	1,100	8,900	25-310	34-420	445	603	5.5	2.50	14	6.6	1/4"

All models: Hose int. 3/8" (10mm) - @90 PSI (@6.3 Bar).

\*Values @90 PSI (@6.3 bar) - 4 sec. \*\*Values @90 PSI (@6.3 bar) - 10 sec. \*\*\* Values at free speed.

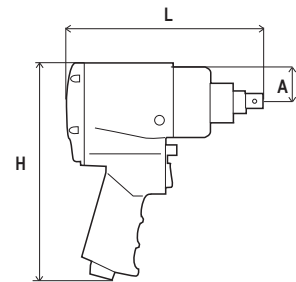
# Dimensions and Accessories



CP6060 SASAB

## DIMENSIONS

MODEL	DIMENSIONS					
	L		H		SIDE TO CENTER - A	
	in.	mm	in.	mm	in.	mm
CP6060 ...	7.6	194	9.8	250	1.46	37
CP9561	8.5	216	9.2	235	1.53	39



## ACCESSORIES INCLUDED

DESCRIPTION	CP6060
Retainer ring with steel insert	C-155472



## ACCESSORIES

### SOCKETS

#### INDIVIDUAL SOCKETS (SAE & METRIC)



MODEL	DESCRIPTION	PART NO.
<b>SAE* (in.)</b>		
S615	3/4" DR STD Impact socket 1-5/16"	894 016 4146
S621D	3/4" DR Deep Impact socket 1-5/16"	894 016 4220
S624D	3/4" DR Deep Impact socket 1-1/2"	894 016 4223



MODEL	DESCRIPTION	PART NO.
<b>METRIC (mm)</b>		
S624M	3/4" DR STD Impact socket 24mm	894 016 4185
S627M	3/4" DR STD Impact socket 27mm	894 016 4188
S630M	3/4" DR STD Impact socket 30mm	894 016 4191
S632M	3/4" DR STD Impact socket 32mm	894 016 4193
S633M	3/4" DR STD Impact socket 33mm	894 016 4194
S627MD	3/4" DR Deep Impact socket 27mm	894 016 4256
S630MD	3/4" DR Deep Impact socket 30mm	894 016 4259
S632MD	3/4" DR Deep Impact socket 32mm	894 016 4261

#### SETS (SAE & METRIC)



MODEL	DESCRIPTION	PART NO.
<b>SAE* (in.)</b>		
SS6014	3/4" DR (14 pcs) Impact Set	894 016 4474
SS6014D	3/4" DR (14 pcs) Deep Impact Set	894 016 4475
SS6008D	3/4" DR (8 pcs) Deep Impact Set	894 016 7073

MODEL	DESCRIPTION	PART NO.
<b>METRIC (mm)</b>		
SS618	3/4" DR (8 pcs) Impact Set	894 016 4472
SS618D	3/4" DR (8 pcs) Deep Impact Set	894 016 4473

More socket sets available in the CP Impact Sockets catalog  
(\*) Available in North America only

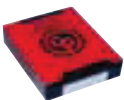


#### RETAINER RING with STEEL INSERT



SQUARE DRIVE	INSIDE DIAMETER OF RED RING		PART NO.
	in.	mm	
3/4"	1-1/4	31	C-155467
3/4"	1-7/16	36	C-155468
3/4"	1-5/8	41	C-134690
3/4"	1-3/4	44	C-134691
3/4"	2	51	C-155585
3/4"	2-1/4	57	C-155486

#### TUNE-UP KITS



MODEL	PART NO.
CP6060 ...	C137568
CP9561	C137569

#### GLOVES



DESCRIPTION	PART NO.
Impact Gloves: Large	894 015 8618
Impact Gloves: Extra Large	894 015 8619

#### LUBRICATION



OIL PROTECTO-LUBE FOR MOTOR	PART NO.
4oz. (0.12 l) - Air Tool Oil	CA149661
20.8oz (0.591 l) - Air Tool Oil	CA000046
1 Gal (3.8l) - Airoilene oil	P089507

GREASE PNEU-LUBE FOR CLUTCH	PART NO.
Pneu-Lube 100GM Tube	894 015 8455
Pneu-Lube Cartridge	894 015 8456
Pneu-Lube 7# Can	894 015 8457
Grease Gun+2 Nozzles	C098689



For Air Line accessory products, Balancers please see pages 78 to 93

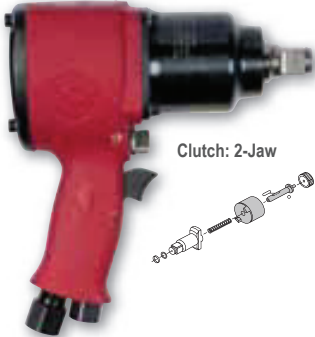


# Impact Wrench 3/4"

## CP6060 SASAR



Teasing throttle for better control



Clutch: 2-Jaw

## CP6060 ZASAB



with Special Zinc Housing  
Non sparking impact wrench for  
explosive environment

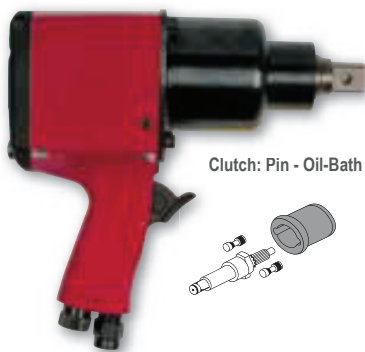


Clutch: 2-Jaw

## CP9561



Fast rundown



Clutch: Pin - Oil-Bath

75 to 650 ft.lb (102 to 880 Nm)

## FEATURES and BENEFITS

- The Best Super Duty application 3/4" impact available
- Reliable and powerful to 2 Jaw clutch
- Durable Steel Clutch Housing for Super Duty harsh applications
- Pistol Shape with 3-piece construction engineered for easy maintenance
- Balanced to reduce fatigue and increase operator comfort



Clutch : 2-Jaw

Available in 1" Hole:  
CP6060 SASAK

**CP6060 SASAB**

### JOINT TYPE

DRIVE	MODEL	DUTY	SOFT	MEDIUM	HARD	VERY HARD
3/4"	CP6060	***	x	x	x	
	CP9561	*		x	x	x

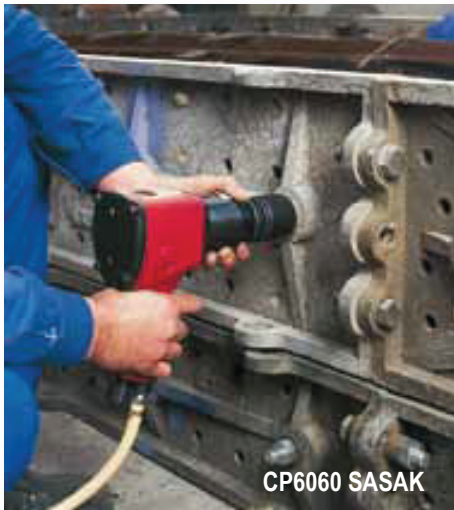
Torque ranges should be used as a guide only. Final torque will depend on the joint, operating pressure and drive accessories.

MODEL	PART NUMBER	BOLT SIZE GRADE		DRIVE	CLUTCH TYPE	HANDLE STYLE	BLOWS PER MIN.	FREE SPEED	WORKING TORQUE (FW)*		MAX. TORQUE (REV)**		NET WEIGHT		AIR CONS. ***		AIR INLET
		SAE 5 in.	ISO 8.8 mm						in.	ft.lb	Nm	ft.lb	Nm	lb	kg	cfm	
CP6060 SASAB	T024059	3/4 - 1	22-34	3/4	2-Jaw	P	1,000	3,500	195-650	265-880	1,000	1,350	11.7	5.3	42	19.8	3/8"
CP6060 SASAR	T024058	3/4 - 1	22-34	3/4	2-Jaw	P	1,000	3,500	195-650	265-880	1,000	1,350	11.9	5.4	42	19.8	3/8"
CP6060 ZASAB	T024064	3/4 - 1	22-34	3/4	2-Jaw	P	1,000	3,500	195-650	265-880	1,000	1,350	11.7	5.3	42	19.8	3/8"
CP9561	615 190 9561	1/2 - 7/8	20-22	3/4	Pin - Oil-Bath	P	900	5,500	75-501	102-680	750	1,020	10.5	4.8	30	14.1	1/4"

Hose int. CP6060 : 1/2" (13mm) - CP9561 : 3/8" (10mm) - @90 PSI (@6.3 Bar).

\*Values @90 PSI (@6.3 bar) - 4 sec. \*\*Values @90 PSI (@6.3 bar) - 10 sec. \*\*\* Values at free speed.

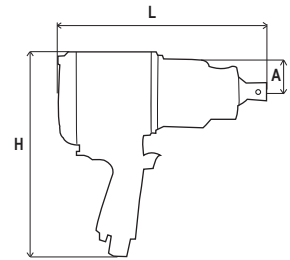
# Dimensions and Accessories



CP6060 SAsAK

## DIMENSIONS

MODEL	DIMENSIONS					
	L		H		SIDE TO CENTER - A	
	in.	mm	in.	mm	in.	mm
CP0611P ..	10.7	272	10.7	273	1.81	46
CP6060 ..	7.6	194	9.8	250	1.78	37
CP6910 RS	11.3	288	11.3	288	1.78	57



## ACCESSORIES INCLUDED

DESCRIPTION	CP0611	CP6910
Support handle	CA048548	205 053 1433
Band-Handle	C116388	-
Screw-Allen Cap	C064806	-
Suspension Hook	-	854 016 6788
Retainer ring with steel insert	C-134692	C-134692



## ACCESSORIES

### SOCKETS

#### INDIVIDUAL SOCKETS (SAE & METRIC)

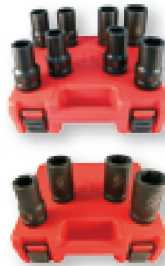


MODEL	DESCRIPTION	PART NO.
<b>SAE* (in.)</b>		
S815	1" DR STD Impact Socket 15/16"	894 016 4278
S824	1" DR STD Impact Socket 1-1/2"	894 016 4287
S817D	1" DR Deep Impact Socket 1-1/16"	894 016 4360
S819D	1" DR Deep Impact Socket 3-1/16"	894 016 4362
S820D	1" DR Deep Impact Socket 1-1/4"	894 016 4363
S821D	1" DR Deep Impact Socket 1-5/16"	894 016 4364
S824D	1" DR Deep Impact Socket 1-1/2"	894 016 4367



MODEL	DESCRIPTION	PART NO.
<b>METRIC (mm)</b>		
S832M	1" DR STD Impact Socket 32mm	894 016 4334
S833M	1" DR STD Impact Socket 33mm	894 016 4335
S824MD	1" DR Deep Impact Socket 24mm	894 016 4407
S827MD	1" DR Deep Impact Socket 27mm	894 016 4410
S830MD	1" DR Deep Impact Socket 30mm	894 016 4413
S832MD	1" DR Deep Impact Socket 32mm	894 016 4414
S833MD	1" DR Deep Impact Socket 33mm	894 016 4415

#### SETS (SAE & METRIC)



MODEL	DESCRIPTION	PART NO.
<b>SAE* (in.)</b>		
SS808	1" DR (8 pcs) Impact Set	894 016 4478
SS808D	1" DR (8 pcs) Deep Impact Set	894 016 4479
<b>METRIC (mm)</b>		
SS814D	1" DR (4 pcs) Impact Set	894 016 6016
SS818D	1" DR (8 pcs) Deep Impact Set	894 016 4477
SS818	1" DR (8 pcs) Impact Set	894 016 4476

More socket sets available in the CP Impact Sockets catalog  
 (\*) Available in North America only



#### GLOVES



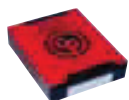
DESCRIPTION	PART NO.
Impact Gloves: Large	894 015 8618
Impact Gloves: Extra Large	894 015 8619

#### RETAINER RING with STEEL INSERT



SQUARE DRIVE	INSIDE DIAMETER OF RED RING		PART NO.
	in.	mm	
1"	1-3/4	44	C-155470
1"	2	51	C-155471
1"	2-1/8	54	C-155472
1"	2-1/4	57	C-134692
1"	2-1/2	63	C-155473

#### TUNE-UP KITS



MODEL	PART NO.
CP0611P ..	C115811
CP6060...	C137568
CP6910 RS	205 052 9653

#### LUBRICATION MOTOR



OIL PROTECTO-LUBE FOR MOTOR	PART NO.
4oz. (0.12 l) - Air Tool Oil	CA149661
20.8oz (0.591 l) - Air Tool Oil	CA000046
1 Gal (3.8l) - Airoilene oil	P089507
GREASE PNEU-LUBE FOR CLUTCH	PART NO.
Pneu-Lube 100GM Tube	894 015 8455
Pneu-Lube Cartridge	894 015 8456
Pneu-Lube 7# Can	894 015 8457
Grease Gun + 2 Nozzles	C098689



For Air Line accessory products, Balancers please see pages 78 to 93



# Impact Wrench 1"

195 to 1,800 ft.lb (265 to 2,440 Nm)

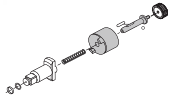
## CP6060 SASAK



Super Duty 1" lightweight



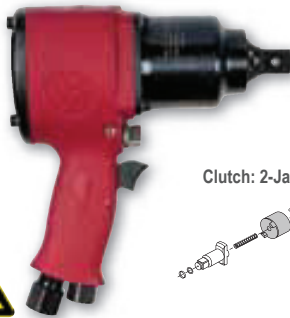
Clutch: 2-Jaw



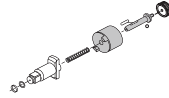
## CP6060 ZASAK



with Special Zinc Housing  
Non sparking impact wrench  
for explosive environment



Clutch: 2-Jaw



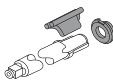
## CP6910 RS



Dual Socket retainer - Ring + Hole  
Hole bail for balancer fitting



Clutch: Pinless Rocking Dog



## FEATURES and BENEFITS

- One of the Best Torque/Weight ratio impacts on the market
- Reliable and powerful to 2-Jaw clutch
- Durable Steel Clutch Housing for Super Duty and harsh applications
- Pistol Shape with a 3-piece construction engineered for easy maintenance
- Teasing throttle for easy bolt starting



Clutch: 2-Jaw

Available with Spline #5  
CP0611P RLS

CP0611P RS

### JOINT TYPE

DRIVE	MODEL	DUTY	VERY SOFT	SOFT	MEDIUM	HARD
1"	CP0611	***		x	x	x
	CP6060	***		x	x	x
	CP6910	*	x	x	x	x

Torque ranges should be used as a guide only. Final torque will depend on the joint, operating pressure and drive accessories.

MODEL	PART NUMBER	BOLT SIZE GRADE		DRIVE	CLUTCH TYPE	HANDLE STYLE	BLOWS PER MIN.	FREE SPEED	WORKING TORQUE (FW)*		MAX. TORQUE (REV)**		NET WEIGHT		AIR CONS. ***		AIR INLET
		SAE 5 in.	ISO 8.8 mm						in.	ft.lb	Nm	ft.lb	Nm	lb	kg	cfm	
CP0611P RLS	T025414	1-1/4	30-34	#5 Spline	2-Jaw	P	1,020	3,500	900-1,800	1,220-2,440	2,800	3,790	23.1	10.5	48	22.6	1/2"
CP0611P RS	T025413	1-1/4	30-34	1	2-Jaw	P	1,020	3,500	900-1,800	1,220-2,440	2,800	3,790	23.1	10.5	48	22.6	1/2"
CP6060 SASAK	T024060	3/4 - 1	20-34	1	2-Jaw	P	1,000	3,500	195-650	265-880	1,000	1,350	11.9	5.4	42	19.8	3/8"
CP6060 ZASAK	T024063	3/4 - 1	20-34	1	2-Jaw	P	1,000	3,500	195-650	265-880	1,000	1,350	11.9	5.4	42	19.8	3/8"
CP6910 RS	615 190 6910	1-1/4	30-34	1	Pinless Rocking Dog	P	600	5,000	960-1,770	1,300-2,400	2,065	2,800	23.0	10.5	35	16.7	1/2"

All models: Hose int. 1/2" (13mm) - @90 PSI (@6.3 Bar).

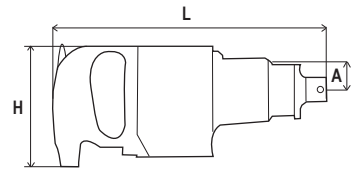
\*Values @90 PSI (@6.3 bar) - 4 sec. \*\*Values @90 PSI (@6.3 bar) - 10 sec. \*\*\* Values at free speed.

# Dimensions and Accessories



## DIMENSIONS

MODEL	DIMENSIONS					
	L		H		SIDE TO CENTER - A	
	in.	mm	in.	mm	in.	mm
CP0611 ..	12.5	318	6.2	158	1.81	46
CP0610 ..	13.5	343	6.4	162	2.13	54
CP6110 ..	13.0	330	6.3	160	1.61	44
CP6920 PALED	13.9	354	9.2	233	2.24	57



## ACCESSORIES INCLUDED

DESCRIPTION	CP0611	CP6110
Support handle	CA048548	C145892
Band-Handle	C116388	C116388
Screw-Allen Cap	C064806	C127944
Retainer ring with steel insert	C-134692	C-134692



## ACCESSORIES

### SOCKETS

#### INDIVIDUAL SOCKETS (SAE & METRIC)



MODEL	DESCRIPTION	PART NO.
<b>SAE* (in.)</b>		
S815	1" DR STD Impact Socket 15/16"	894 016 4278
S824	1" DR STD Impact Socket 1-1/2"	894 016 4287
S817D	1" DR Deep Impact Socket 1-1/16"	894 016 4360
S819D	1" DR Deep Impact Socket 3-1/16"	894 016 4362
S820D	1" DR Deep Impact Socket 1-1/4"	894 016 4363
S821D	1" DR Deep Impact Socket 1-5/16"	894 016 4364
S824D	1" DR Deep Impact Socket 1-1/2"	894 016 4367



MODEL	DESCRIPTION	PART NO.
<b>METRIC (mm)</b>		
S832M	1" DR STD Impact Socket 32mm	894 016 4334
S833M	1" DR STD Impact Socket 33mm	894 016 4335
S824MD	1" DR Deep Impact Socket 24mm	894 016 4407
S827MD	1" DR Deep Impact Socket 27mm	894 016 4410
S830MD	1" DR Deep Impact Socket 30mm	894 016 4413
S832MD	1" DR Deep Impact Socket 32mm	894 016 4414
S833MD	1" DR Deep Impact Socket 33mm	894 016 4415

#### SETS (SAE & METRIC)



MODEL	DESCRIPTION	PART NO.
<b>SAE* (in.)</b>		
SS808	1" DR (8 pcs) Impact Set	894 016 4478
SS808D	1" DR (8 pcs) Deep Impact Set	894 016 4479
<b>METRIC (mm)</b>		
SS814D	1" DR (4 pcs) Impact Set	894 016 6016
SS818D	1" DR (8 pcs) Deep Impact Set	894 016 4477
SS818	1" DR (8 pcs) Impact Set	894 016 4476

More socket sets available in the CP Impact Sockets catalog  
 (\*) Available in North America only



#### GLOVES



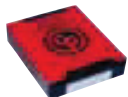
DESCRIPTION	PART NO.
Impact Gloves: Large	894 015 8618
Impact Gloves: Extra Large	894 015 8619

#### RETAINER RING with STEEL INSERT



SQUARE DRIVE	INSIDE DIAMETER OF RED RING		PART NO.
	in.	mm	
1"	1-3/4	44	C-155470
1"	2	51	C-155471
1"	2-1/8	54	C-155472
1"	2-1/4	57	C-134692
1"	2-1/2	63	C-155473
1"	2-5/8	67	C-155474

#### TUNE-UP KIT



MODEL	PART NO.
CP0611 ..	C115811

#### LUBRICATION



OIL PROTECTO-LUBE FOR MOTOR	PART NO.
4oz. (0.12 l) - Air Tool Oil	CA149661
20.8oz (0.591 l) - Air Tool Oil	CA000046
1 Gal (3.8l) - Airoilene oil	P089507
GREASE PNEU-LUBE FOR CLUTCH	PART NO.
Pneu-Lube 100GM Tube	894 015 8455
Pneu-Lube Cartridge	894 015 8456
Pneu-Lube 7# Can	894 015 8457
Pneu-Lube + 2 Nozzles	C098689



For Air Line accessory products, Balancers please see pages 78 to 93

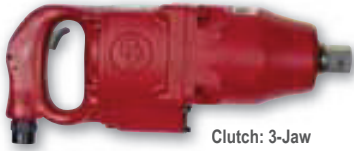


# Impact Wrench 1"

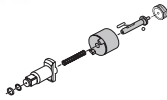
## CP0610 GALED

## CP0610 PALED

Durable clutch mechanism



Clutch: 3-Jaw

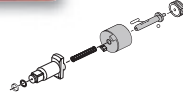


## CP0611 HAZED

with Special Zinc Housing  
Non sparking impact wrench for  
explosive environment



Clutch: 2-Jaw

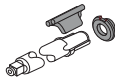


## CP6920 PALED

Power regulator



Clutch: Pinless Rocking Dog



## CP6110 GASED

## CP6110 PASED

Best Clutch for very soft joint



Clutch: Twin lobe



200 to 1,800 ft.lb (270 to 2,440 Nm)

## FEATURES and BENEFITS

- One of the Best Torque/Weight ratio on the market
- Reliable and powerful 2-Jaw clutch
- Durable Steel Clutch Housing for Super Duty and harsh applications
- D-Handle shape with internal trigger
- 3-piece construction engineered for easy maintenance
- Adjustable Side Handle allows repositioning of tool according to the application



Clutch: 2-Jaw

Available with External trigger:  
CP0611 GASED or CP0611 GASEL  
Available with Spline #5:  
CP0611 PASEL or CP0611 GASEL

## CP0611 PASED

### JOINT TYPE

DRIVE	MODEL	DUTY	VERY SOFT	SOFT	MEDIUM	HARD
1"	CP0611	***		x	x	x
	CP0610	**		x	x	x
	CP6110	**	x	x	x	
	CP6920	*	x	x	x	x

Torque ranges should be used as a guide only. Final torque will depend on the joint, operating pressure and drive accessories.

MODEL	PART NUMBER	BOLT SIZE GRADE		DRIVE in.	CLUTCH TYPE	HANDLE STYLE	BLOWS PER MIN.	FREE SPEED rpm	WORKING TORQUE (FW)*		MAX. TORQUE (REV)**		NET WEIGHT		AIR CONS. ***		AIR INLET NPT
		SAE 5 in.	ISO 8.8 mm						ft.lb	Nm	ft.lb	Nm	lb	kg	cfm	l/s	
CP0611 PASED	T022578	1-1/4	30-34	1	2-Jaw	DIT	1,020	3,500	900-1,800	1,220-2,440	2,800	3,790	22.5	10.2	48	22.6	1/2"
CP0611 PASEL	T022579	1-1/4	30-34	#5 Spline	2-Jaw	DIT	1,020	3,500	900-1,800	1,220-2,440	2,800	3,790	22.5	10.2	48	22.6	1/2"
CP0611 GASED	T022580	1-1/4	30-34	1	2-Jaw	DOT	1,020	3,500	900-1,800	1,220-2,440	2,800	3,790	22.5	10.2	48	22.6	1/2"
CP0611 GASEL	T022581	1-1/4	30-34	#5 Spline	2-Jaw	DOT	1,020	3,500	900-1,800	1,220-2,440	2,800	3,790	22.5	10.2	48	22.6	1/2"
CP0611 HAZED	T022582	1-1/4	30-34	1	2-Jaw	DIT	1,020	3,500	900-1,800	1,220-2,440	2,800	3,790	22.5	10.2	48	22.6	1/2"
CP0610 GALED	T018046	3/4 - 1-1/8	22-27	1	3-Jaw	DOT	825	3,000	200-950	270-1,258	1,350	1,830	20.5	9.3	48	22.6	1/2"
CP0610 PALED	T018253	3/4 - 1-1/8	22-27	1	3-Jaw	DIT	825	3,000	200-950	270-1,285	1,350	1,830	20.5	9.3	48	22.6	1/2"
CP6110 GASED	T024425	3/4 - 1-1/4	24-30	1	Twin Lobe	DOT	960	3,500	376-1,250	510-1695	1,900	2,575	21.5	9.7	53	25.0	1/2"
CP6110 PASED	T025100	3/4 - 1-1/4	24-30	1	Twin Lobe	DIT	960	3,500	376-1,250	510-1695	1,900	2,575	21.5	9.7	53	25.0	1/2"
CP6920 PALED	615 190 6920	1-1/4 - 1-3/8	30-34	1	Pinless Rocking Dog	DIT	630	5,500	959-1,770	1,300-2,400	2,065	2,800	23.0	10.5	35	16.7	1/2"

All models: Hose int. 1/2" (13mm) - @90 PSI (@6.3 Bar) - DIT: D-Handle Inside trigger - DOT: D-Handle Outside trigger. \*Values @90 PSI (@6.3 bar) - 4 sec. \*\*Values @90 PSI (@6.3 bar) - 10 sec. \*\*\* Values at free speed.

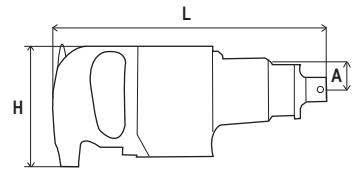
# Dimensions and Accessories



CP6120 PASSED

## DIMENSIONS

MODEL	DIMENSIONS					
	L		H		SIDE TO CENTER-A	
	in.	mm	in.	mm	in.	mm
CP6120 ...	14.8	375	6.5	165	2.12	54
CP0614 ...	16.4	417	6.5	165	2.36	60



## ACCESSORIES INCLUDED

DESCRIPTION	CP6120	CP0614
Support handle	CA048548	C039428
Band-Handle	C119061	-
Screw-Allen Cap	P073025	-
Retainer ring with steel insert	C-134695	C-134695



## ACCESSORIES

### SOCKETS

#### INDIVIDUAL SOCKETS (METRIC)



MODEL	DESCRIPTION	PART NO.
S1041M	1-1/2" DR STD Impact Socket 41mm	894 016 9348
S1046M	1-1/2" DR STD Impact Socket 46mm	894 016 9349
S1050M	1-1/2" DR STD Impact Socket 50mm	894 016 9350
S1055M	1-1/2" DR STD Impact Socket 55mm	894 016 9351
S1060M	1-1/2" DR STD Impact Socket 60mm	894 016 9352
S1065M	1-1/2" DR STD Impact Socket 65mm	894 016 9353
S1070M	1-1/2" DR STD Impact Socket 70mm	894 016 9354
S1075M	1-1/2" DR STD Impact Socket 75mm	894 016 9355
S1080M	1-1/2" DR STD Impact Socket 80mm	894 016 9356
S1085M	1-1/2" DR STD Impact Socket 85mm	894 016 9357
S1090M	1-1/2" DR STD Impact Socket 90mm	894 016 9358
S1080MD	1-1/2" DR Deep Impact Socket 80mm	894 016 9359

#### ADAPTER

MODEL	DESCRIPTION	PART NO.
A1016	1-1/2" DR x 1 Male adapter with Pin/Hole	894 016 9360
A1040	1-1/2" DR x 2-1/2" Male adapter with Pin	894 016 9361

#### EXTENSION BAR

MODEL	DESCRIPTION	PART NO.
E105	1-1/2" DR x 5" Extension Bar with Pin/Hole	894 016 9362
E1010	1-1/2" DR x 10" Extension Bar with Pin	894 016 9363
E1020	1-1/2" DR x 20" Extension Bar with Pin	894 016 9364

#### UNIVERSAL JOINT

MODEL	DESCRIPTION	PART NO.
J10U	1-1/2" DR Universal Joint with Pin/Hole	894 016 9365

More sizes available in the CP Impact Sockets catalog.



### RETAINER RING with STEEL INSERT



### GLOVES



SQUARE DRIVE	INSIDE DIAMETER OF RED RING		PART NO.
	in.	mm	
1-1/2"	2-7/8	73	C-134693
1-1/2"	3-3/8	86	C-134694
1-1/2"	3-7/8	98	C-134695
1-1/2"	4-3/8	111	C-134696

DESCRIPTION	PART NO.
Impact Gloves: Large	894 015 8618
Impact Gloves: Extra Large	894 015 8619

### LUBRICATION



OIL PROTECTO-LUBE FOR MOTOR	PART NO.
4oz. (0.12 l) - Air Tool Oil	CA149661
20.8oz (0.591 l) - Air Tool Oil	CA000046
1 Gal (3.8l) - Airoilene oil	P089507

GREASE PNEU-LUBE FOR CLUTCH	PART NO.
Pneu-Lube 100GM Tube	894 015 8455
Pneu-Lube Cartridge	894 015 8456
Pneu-Lube 7# Can	894 015 8457
Grease Gun + 2 Nozzles	C098689



For Air Line accessory products, Balancers please see pages 78 to 93



# Impact Wrench 1-1/2"

601 to 2,400 ft.lb (815 to 3,250 Nm)

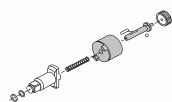
**CP6120 PASEL**

**CP6120 GASED**

**CP6120 GASEL**



Clutch: 2-Jaw

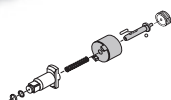


**CP0614 PALED**

**CP0614 GALED**



Clutch: 2-Jaw



## FEATURES and BENEFITS

- Durable Steel Clutch Housing for Super Duty and strong construction
- Designed for Super Duty and harsh applications
- Reliability and extreme power provided by a durable 2-Jaw clutch
- D-Handle shape with internal trigger
- 3-piece construction engineered for easy maintenance
- Adjustable Side Handle allows repositioning of tool according to the application



Available with External trigger:  
CP6120 GASED or CP6120 GASEL

**CP6120 PASEL**

### JOINT TYPE

DRIVE	MODEL	DUTY	SOFT	MEDIUM	HARD
1-1/2"	CP6120	***	x	x	x
	CP0614	**	x	x	x

Torque ranges should be used as a guide only. Final torque will depend on the joint, operating pressure and drive accessories.

MODEL	PART NUMBER	BOLT SIZE GRADE		DRIVE	CLUTCH TYPE	HANDLE STYLE	BLOWS PER MIN.	FREE SPEED	WORKING TORQUE (FW)*		MAX. TORQUE (REV)**		NET WEIGHT		AIR CONS. ***		AIR INLET
		SAE 5 in.	ISO 8.8 mm						in.	ft.lb	Nm	ft.lb	Nm	lb	kg	cfm	
CP6120 PASED	T018841	1-1-1/2	27-36	1-1/2	2-Jaw	DIT	960	3,000	601-1,999	815-2,710	3,500	4,740	33.9	15.4	60	28.3	1/2"
CP6120 PASEL	T018235	1-1-1/2	27-36	#5 Spline	2-Jaw	DIT	960	3,000	601-1,999	815-2,710	3,500	4,740	33.9	15.4	60	28.3	1/2"
CP6120 GASED	T018237	1-1-1/2	27-36	1-1/2	2-Jaw	DOT	960	3,000	601-1,999	815-2,710	3,500	4,740	33.9	15.4	60	28.3	1/2"
CP6120 GASEL	T017755	1-1-1/2	27-36	#5 Spline	2-Jaw	DOT	960	3,000	601-1,999	815-2,710	3,500	4,740	33.9	15.4	60	28.3	1/2"
CP0614 GALED	T020021	1-3/8	33-40	1-1/2	2-Jaw	DOT	500	2,500	1,200-2,400	1,620-3,250	4,000	5,420	31.5	14.3	58	27.4	1/2"
CP0614 PALED	T020022	1-3/8	33-40	1-1/2	2-Jaw	DIT	500	2,500	1,200-2,400	1,620-3,250	4,000	5,420	31.5	14.3	58	27.4	1/2"

All models: Hose int. 3/4" (19mm) - @90 PSI (@6.3 Bar) DIT: D-Handle Inside trigger / DOT: D-Handle Outside trigger. \*Values @90 PSI (@6.3 bar) - 4 sec. \*\*Values @90 PSI (@6.3 bar) - 10 sec. \*\*\* Values at free speed.