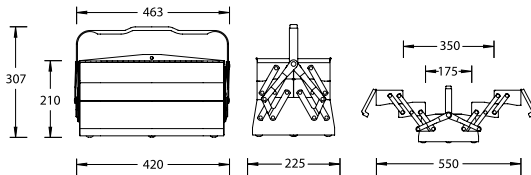
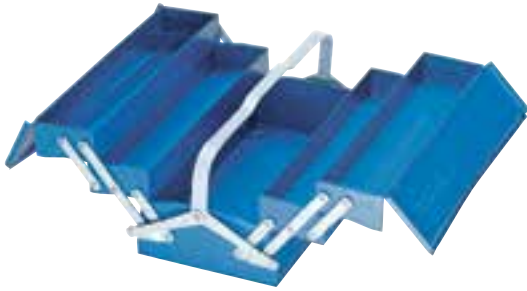


1265 L TOOL BOX

5 compartments

- > With riveted joints
- > Compartments to be fully pulled out
- > Great stability even if only one side is opened
- > GEDORE blue powder-coated
- > Dimensions: H 210 x W 420 x D 225 mm
- > Particularly suitable for tool assortments S 1151 and S 1151 A

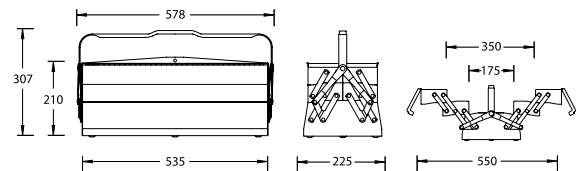
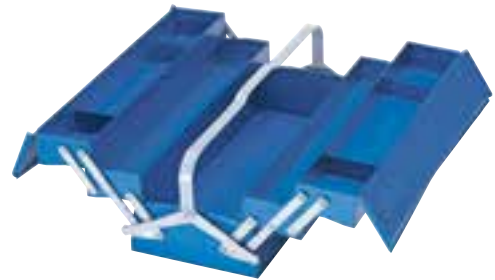


H	W	D		Code	No.
210	420	225	5.2	6609060	1265 L

1335 L TOOL BOX

5 compartments, long pattern

- > With riveted joints
- > Compartments to be fully pulled out
- > Great stability even if only one side is opened
- > GEDORE blue powder-coated
- > Dimensions: H 210 x W 535 x D 225 mm
- > Particularly suitable for tool assortments S 1024, S 1025, S 1151 and S 1151 A



H	W	D		Code	No.
210	535	225	6.3	6610580	1335 L

Tool Chests

Central locking
Drawers fully extendable

1410 L TOOL CHEST

- > With three large and three small drawers and carrying tray
- > All drawers fully extendable on runners
- > Particularly suitable for tool assortments S 1002 and S 1005 A
- > Made from sturdy sheet steel, fitted with central lock
- > In GEDORE blue
- > Dimensions: H 364 x W 663 x D 308 mm
- > Max. loading 75 kg



H	W	D		Code	No.
364	663	308	28.0	6614300	1410 L

1420 L TOOL CHEST

- > With three large drawers and carrying tray
- > All drawers fully extendable on runners
- > Particularly suitable for tool assortments S 1002 and S 1005 A
- > Made from sturdy sheet steel, fitted with central lock
- > In GEDORE blue
- > Dimensions: H 298 x W 610 x D 265 mm
- > Max. loading 75 kg



H	W	D		Code	No.
298	610	265	20.0	6615700	1420 L

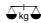


Tool Cases

1370 Z TOOL BOX

- › In special zinc-plated sheet steel for optimum protection against corrosion
- › The manufacture using pressure-joint technology means great rigidity
- › With removable small-parts compartment ES 1370 Z
- › Fitted with carrying strap E-1370 in nylon fabric with shoulder protector
- › Max. loading 25 kg




H	W	D		Code	No.
224	554	202	5.0	1497677	1370 Z
69	179	167	0.6	1497634	ES 1370 Z
			0.1	5600300	E-1370

1440 Z TOOL BOX JUMBO

zinc-plated

- › In special zinc-plated sheet steel for the heavy everyday-use
- › Optimum corrosion protection, spray water protected
- › Manufactured in pressure jointing technique, guarantees highest sturdiness
- › Robust metal fittings and protected hinges
- › Stopper to hold the lid open
- › Wide carrying handles
- › Max. loading 150 kg
- › Lockable through padlock
- › Lined interior
- › Removable tray for small parts (ES 1440)



H	W	D		Code	No.
320	698	387	17.0	6628280	1440 Z-70
340	841	427	21.0	6628360	1440 Z-83
440	918	537	30.0	6629170	1440 Z-91
320	998	387	22.0	6629250	1440 Z-100

1441 Z TRANSPORT FRAME

zinc-plated

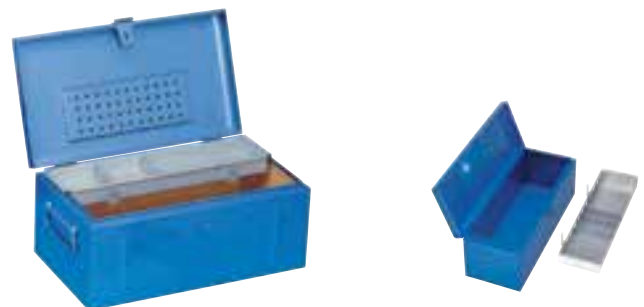
- › In special zinc-plated sheet steel
- › Makes the tool boxes JUMBO 1440 / 1440 Z mobile
- › With 4 castors, 2 of them with brake
- › Delivery dismantled, for self-assembly




H	W	D		Code	No.
135	697	386	4.9	1497766	1441 Z-70
135	840	426	5.4	1497774	1441 Z-83
135	917	536	6.0	1497782	1441 Z-91
135	997	386	5.8	1497790	1441 Z-100

1440 TOOL BOX JUMBO

- › Sheet steel construction with strong handles (apart from 1440-45, 1440-64)
- › In GEDORE blue, waterproof
- › Strong joints, handles and stopper to hold the lid open
- › Special lining, with document partition and removable tray for small parts ES 1440
- › Please order separately transport frame 1441 Z
- › Special finishes available on request
- › 1440-45 without small parts tray
- › Supported load 1440-70, -83, -91, -100 up to 400 kg without using the fold-down handles. When lifting, static supporting power of the fold-down handles max. 150 kg



H	W	D		Code	No.
230	450	230	4.0	6612440	1440-45
230	640	230	7.0	6611040	1440-64
320	698	387	19.0	6616510	1440-70
340	841	427	23.0	6616780	1440-83
440	918	537	32.0	6616860	1440-91
320	998	387	25.0	6616940	1440-100